

# Construction

Dust Extractors & Air Cleaners & Accessories

Healthy Business

**Dustcontrol**®



# Dustcontrol – Technology for Healthy Business

Removing dust from the workplace is not just a working environment and health issue, it is also a business issue. The cleaner the working environment, the better the end result. We call it **Healthy Business**.

## What we offer

Dustcontrol manufactures mobile dust extractors for industrial and construction use, fixed extraction systems, peripheral equipment and accessories. We help companies all over the world to achieve a cleaner working environment. Our development department and production facilities are located in Sweden.

Using one of our solutions, you can extract dust, fumes, chips, oil spillages and other harmful substances, right at their source. The result is efficient production. A healthy working environment results in less absence due to illness, more efficient production, less downtime and better production quality.

You will find us in many different types of industries where a clean working environment is necessary. Dustcontrol supplies a complete range of products and accessories for small and large companies alike. For example, we supply advanced cleanroom solutions for the pharmaceutical and electronics industries, mobile dust extractors of various sizes for construction and rental companies, and central extraction systems for the automotive and newspaper printing industries.

All of our systems are unique and tailored to each individual company's specific requirements.



## Customer Focus

Dustcontrol was founded in 1972, with the idea of manufacturing extraction systems to capture dust and other pollutants at the source. We work closely with our customers, which means that we are always up to date regarding the requirements, regulations and working conditions in different types of workplace. We supply products that meet these ever-changing needs.

But it is not only products that we provide. We also provide the answers to questions such as: How can you capture and extract different kinds of particles and pollutants in the best possible way for your business? How do you deal with waste that can be recycled or reused?



The filter systems in all Dustcontrol dust extractors are built to comply with the the stringent IEC machine classification H.

All our mobile machines are equipped with a fine filter and a HEPA filter (H13) that clean the exhaust air to 99.995 %. These high-efficiency filters also have a long service life, which not only results in cleaner air, but also low filter costs.

With Dustcontrol as your business partner, you will get the answers to these and any other questions that you may have. Whatever the conditions, we develop a source extraction solution that is right for you and your business.

## Service & Expertise

Our sales organisation comprises experienced technicians with specialist skills in their areas of expertise. If you need a mobile solution, we will come to your site and show you how it works. In the case of stationary installations, we can design and dimension the entire system to fully match your needs. We can take care of installation, commissioning and documentation, as well as planning a maintenance and service schedule.

We offer a complete service package, including accessories and spare parts. We manufacture and customise portable dust extractors with very high levels of filtration, in which we use our proprietary filters that have set the industry standard.

As well as being responsible for delivery and installation, our project managers also train the personnel who will be working with our products and systems. In most countries, we have our own team of qualified installers with in-depth knowledge of our products.

With the help of Dustcontrol, you will achieve both a cleaner working environment and a healthy business.

## Dustcontrol AB

160 employees.

Founded in 1972.

Head office and factory  
in Norsborg, Sweden.

The company is family-owned.

Subsidiaries in the United Kingdom,  
Germany, Austria, USA and Finland.

Distributors in Europe, Asia-Pacific  
and North & South America.



# Our Symbols

1-phase

The dust extractor has a 1-phase power system. Single motor and Twin motor

3-phase

The dust extractor has a 3-phase power system.



The filter systems in all mobile Dustcontrol dust extractors are built to comply with the EN 60335-2-69, Annex AA, H-class.



This device is H-classified and third party certified by a notified body according to EN 60335-2-69 Annex AA.



Product is safety tested and certified by Underwriters Laboratories.



The product is also available in ESD version.



**Warning label – Asbestos.** This device is H-classified and third party certified by a notified body according to EN 60335-2-69, Annex AA and TRGS 519.

**Test Certificate – DGUV Test**



We are certified according to ISO14001, ISO 9001 and ISO 45001.

Dustcontrol AB makes every effort to maintain the accuracy and quality of the information provided in this catalogue. However, Dustcontrol AB cannot guarantee and assumes no legal liability or responsibility for the accuracy or completeness of the information provided. The information contained in this catalogue is for general guidance only.

The copyright of all content on this catalogue is owned by Dustcontrol AB. No part of the Dustcontrol AB catalogue may be changed, reproduced, stored in or transmitted on any website or medium without the prior written permission of Dustcontrol AB. Requests to republish any material must be sent to [support@dustcontrol.se](mailto:support@dustcontrol.se) In case of any questions or remarks, feel free to contact us.

# Index

|  |     |
|--|-----|
| Machines for every Job                         | 6-7 |
| Choose the right machine                       | 8-9 |
| What do the letters mean against our products? | 10  |

1-phase

## Dust Extractors

|                     |    |
|---------------------|----|
| DC 1800 a           | 12 |
| DC 2900 a/c         | 13 |
| DC 2900 L           | 13 |
| DC Tromb 400 a/c/L  | 16 |
| DC Tromb Twin cc/cL | 16 |
| DC Tromb 600 L      | 18 |

3-phase

## Dust Extractors

|                             |    |
|-----------------------------|----|
| DC Storm 600 a/c/L          | 22 |
| DC Tromb Turbo Direct Start | 24 |
| DC 5900 15 hp P a/c/L       | 25 |

## Compare our Dust Extractors

|                     |       |
|---------------------|-------|
| Semi-Mobile Systems | 26-27 |
|                     | 28-29 |

## Dustcontrol Air Cleaners

|                      |    |
|----------------------|----|
| DC AirCube 500       | 32 |
| DC AirCube 1200/2000 | 33 |

## Dustcontrol Pre-Separators

|                             |    |
|-----------------------------|----|
| DCF 60 & DCF 2800           | 36 |
| DCF Cyclone Separator Cover | 36 |
| DCF Tromb & DCF Storm       | 37 |

## Classification of Dust Extractors & HEPA Filters

38-39

## Accessories and Consumables

|                         |       |
|-------------------------|-------|
| Cleaning Accessories    | 40-43 |
| DC Reach High Level Set | 44-45 |
| Hoses                   | 46-49 |
| Suction Casings         | 50-57 |
| Choose the Right Filter | 58-59 |
| Filters                 | 60-62 |
| Bags                    | 63    |

## Strategy & Certifications

64

## Premium Packaging & Service

65

## Contact Info

66

## Worldwide Distributors

67

# Machines for every job

No matter who you are and what type of work you are involved in, we have exactly the right machines for you and the job that you do. Small and agile or big and powerful? Only you know which Dustcontrol machine is the right one for you.

Floor Finisher

Drilling Specialist

Decontamination  
and Abatement  
Specialist

0



Construction Worker

Carpenter

Painter

# Choose the Right Machine

1-phase

## Dust extractor

**DC 1800.** The DC 1800 H and DC 1800 XL are high-quality, compact versions of our best-selling DC 2900. It combines ease of use with a large suction capacity and high level of filtration.

**DC 2900.** A small, lightweight dust extractor that can handle tough conditions. Equipped with a cyclone inlet, reverse pulse filter cleaning and separate HEPA filter.

**DC Tromb 400** is a compact, powerful, robust and efficient 1-phase dust extractor. There are three versions within the Tromb family: DC Tromb H 400 dust extractor, DCF Tromb pre-separator and a DC Tromb H 400 Twin dust extractor and pre-separator in one.

**DC Tromb 600** is our latest powerful single-phase dust extractor. The maximum air flow is as high as 600 m<sup>3</sup>/h = 353 cfm, which is more than enough capacity for equipment such as large floor grinders and large electric cut-off saws with max 800 mm/32".

## Task or tool

|  |  |
|--|--|
| Drilling                               | Small crosscut and mitre saw, jackhammer |
| Cleaning Ø38 mm/1.5"                   | Personal decontamination                 |
| Reciprocating saw                      | Depressed centre disc Ø125 mm/5"         |
| Jig saw                                | Wall sander Ø125 mm/5"                   |
| Abrasive disc Ø125 mm/5"               | Oscillating machine                      |
| Fibre disc Ø125 mm/5"                  |  |
| Abrasive disc Ø230 mm/9"               | Depressed centr. disc Ø230 mm/9"         |
| Grooving saw 2xØ150 mm/6"              | Concrete milling machine                 |
| Jackhammer, Circular saw               | Chipping hammer                          |
| Concrete floor grinding max 500 mm/19" | Cleaning Ø50 mm/2"                       |
| Max 800 mm/32"                         | Filler sanding                           |

3-phase

## Dust extractor

### DC Storm 600

DC Storm is compact, simple to transport and powerful. All these models feature a direct-driven, three-phase turbo pump suitable for continuous operation, heavy material transport, source extraction and cleaning. Equipped with frequency converters are suitable for use when only 16A access is available.

**DC Tromb Turbo** is equipped with a powerful three-phase turbo motor which is suitable for heavy cleaning (38 mm/1.5" accessories).

## Task or tool

|                                      |                       |
|--------------------------------------|-----------------------|
| Concrete floor grinding 850 mm/33,5" | Semi-mobile system    |
| Abrasive disc Ø300 mm/12"            | Material transport    |
| Suction lance Ø76 mm/3"              | Brick saw Ø400 mm/16" |
| Concrete milling machine             | Cleaning Ø50 mm/2"    |
| Depressed centre disc Ø300 mm/12"    |                       |

## Air cleaner

### DC AirCube 500, 1200 and 2000

Air cleaners are used as a complement to source extraction in very dusty environments. Recommended air change is 10 times per hour minimum.

## Task or tool

Jackhammering, wall sanding, concrete grinding, demolition work, kitchen and bathroom renovation, and other construction work



## Pre-Separators

When large quantities of dust are produced, we recommend a pre-separator:



DCF 2800 c/L



DCF 60



DCF Tromb L



DCF Storm L

## Dust Extractors

A selection of the Dust Extractor solutions we offer. Please go to each product-page to see all container collection options!



DC 1800 H a



DC 2900 a/c



DC 2900 L



DC Tromb H 400



DC Tromb H Twin 400 c/L



DC Tromb 600 L



DC Tromb Turbo L



DC Storm 600 L



DC 59000 15hp P

## Dust Classification H



The filter systems in all Dustcontrol dust extractors are built to comply with the stringent IEC machine classification H.



DC AirCube 500



DC AirCube 1200



DC AirCube 2000



## What do the letters mean against our products?

These letters describe which collection container comes with our machines. For our twin-models we use a combination, CL, AA and CA.

We also use abbreviations for the various performance, usage and material of the machines. We hope this will make your selection easier and quicker.

### Collection Containers:

- c Bag
- a Container
- L Longopac bag

### Performance, Usage and Material:

- H This device is H-classified and third party certified by a notified body according to EN 60335-2-69 Annex AA.
- P Turbo pump in Parallel drive
- S Turbo pump in Serial drive
- TR Compressed air driven
- EX ATEX
- SS Stainless Steel container/cyclone
- I Industry-line
- Turbo Turbo-3-phase motor
- DCF Pre-Separator

**MINI**

# Dust Extractors



**1-Phase  
Dust Extractors**

## Single-Phase Dust Extractors

# DC 1800 H

This machine is particularly suitable for general cleaning and source extraction from handheld power tools (with suction casings up to Ø125 mm/5") and small table saws.

The DC 1800 H is equipped with a container. A plastic bag can be used inside the container to facilitate the emptying of dust and other material.

### Part No DC 1800 H

101830 115V /60Hz, US/CAN

1-phase



### Supplied with (Part No)

Suction hose (Ø38 mm/1.5"), 5 m (2111)  
Suction hose, antistatic (Ø38 mm/1.5"), 5 m/16 ft (2012)  
UK/US/CAN models  
Connecting sleeve (2115)  
Coupling socket (2108)  
Floor nozzle (B370 mm/W17") (7235)  
Suction pipe (Ø38 mm/1.5") (7257)  
Plastic bag (42291)  
Bag support frame (42369)  
Fine filter, cellulose (42029)  
HEPA H13 filter (42027)



### Technical data

|                                       |                      |
|---------------------------------------|----------------------|
| HxWxD [mm/in]                         | 780x405x390/31x16x15 |
| Weight [kg/lb]                        | 14/31                |
| Hose length Ø38 mm /1.5" [m/ft]       | 5/16                 |
| Collection container [l/gal]          | 20/5.2               |
| Flow max, fan, EU [m³/h]              | 205                  |
| Flow max, fan, UK 115V/230V [m³/h]    | 190/205              |
| Flow max, fan, US/CAN 115V [cfm]      | 126.5                |
| Negative pressure, max, EU/UK [kPa]   | 24                   |
| Negative pressure, max, US/CAN [inwg] | 84                   |
| Power 115/230V [W]                    | 1340/1285            |
| Sound level [dB(A)]                   | 68                   |



With plastic bag

# DC 2900<sup>C</sup>

The DC 2900c is our most popular dust extractor. It is suitable for vacuum cleaning and source extraction from handheld power tools (with suction casings up to Ø125 mm/5") and small table saws. The DC 2900c has a sturdy steel chassis with large wheels, but is still light and portable.

## Part No DC 2900c

120015 115V /60Hz, US/CAN



## Supplied with (Part No)

- Suction hose (Ø38 mm/1.5"), 5 m/16 ft (2111)
- Suction hose, antistatic (Ø38 mm/1.5"), 5 m/16 ft (2012) UK/US/CAN models
- Connecting sleeve (2115)
- Coupling socket (2108)
- Floor nozzle B370/W17" (7235)
- Suction pipe Ø38 mm/1.5" (7257)
- Plastic bag (42702)
- Fine filter, cellulose (42029)
- HEPA H13 filter (42027)



## Technical data

|                                       |                       |
|---------------------------------------|-----------------------|
| HxWxD [mm/in]                         | 1110x445x570/44x17x22 |
| Weight [kg/lb]                        | 16/35                 |
| Hose length Ø38 mm /1.5" [m/ft]       | 5/16                  |
| Collection container [l/gal]          | 20/5.3                |
| Flow max, fan, EU [m³/h]              | 205                   |
| Flow max, fan, UK 115V/230V [m³/h]    | 190/205               |
| Flow max, fan, US/CAN 115V [cfm]      | 126.5                 |
| Negative pressure, max, EU/UK [kPa]   | 24                    |
| Negative pressure, max, US/CAN [inwg] | 96                    |
| Power 115/230V [W]                    | 1284/1285             |
| Sound level [dB(A)]                   | 68                    |

With Longopac

# DC 2900<sup>L</sup>

The DC 2900 is our most popular dust extractor. It is suitable for vacuum cleaning and source extraction from handheld power tools (with suction casings up to Ø125 mm/5") and small table saws.

## Part No DC 2900L

122015 115V, UL

## Accessories (Part No)

- Longopac mini 12 (6 pcs á 12 m) (44763)
- Longopac mini 23 (4 pcs á 23 m) (432177)



## Supplied with (Part No)

- Suction hose (Ø38 mm/1.5"), 5 m/16 ft (2111)
- Suction hose, antistatic (Ø38 mm/1.5"), 5 m/16 ft (2012) UK/US/CAN models
- Connecting sleeve (2114)
- Coupling socket (2108)
- Floor nozzle B370/W17" (7235)
- Suction pipe Ø38 mm/1.5" (7257)
- Longopac mini 12 (44763)
- Fine filter, cellulose (42029)
- HEPA H13 filter (42027)



## Technical data

|                                       |                       |
|---------------------------------------|-----------------------|
| HxWxD [mm/in]                         | 1110x445x570/44x17x22 |
| Weight [kg/lb]                        | 19/42                 |
| Hose length Ø38 mm /1.5" [m/ft]       | 5/16                  |
| Collection container [m/ft]           | Longopac              |
| Flow max, fan, EU [m³/h]              | 205                   |
| Flow max, fan, UK 115V/230V [m³/h]    | 190/205               |
| Flow max, fan, US/CAN 115V [cfm]      | 126.5                 |
| Negative pressure, max, EU/UK [kPa]   | 24                    |
| Negative pressure, max, US/CAN [inwg] | 96.4                  |
| Power 115V/230V [W]                   | 1340/1285             |
| Sound level [dB(A)]                   | 68                    |



## Capture dust with source extraction.

All dust on construction sites is a health hazard in the long term. However, there are some types of dust that are hazardous in the short term too. It has become standard practice for modern construction companies to take the health of their employees seriously and to minimise the levels of dust in the workplace.

Source extraction means that the dust is captured before it spreads and before it can be breathed in. Dust levels can be significantly reduced by fitting all power tools with suction casings and connecting these to efficient dust extractors.

Cleaning should be carried out with a dust extractor with the classification H. The dust extractor should be equipped with a HEPA filter to prevent the spread of the finest dust particles. Sweeping simply stirs the hazardous dust up into the air, subjecting those in the area to further exposure. To put it simply, source extraction and cleaning using approved dust extractors are absolutely vital.

# Dust Extractors

**MINI**

**1-Phase  
Dust Extractors**

## Single-Phase Dust Extractors

# DC Tromb 400

Dustcontrol has taken the DC Tromb H 400 to a new level. There are now three new versions within the Tromb family: DC Tromb H 400 dust extractor, DCF Tromb pre-separator and a DC Tromb Twin dust extractor and pre-separator in one.

As always, we are focusing to meet modern safety requirements along with an ergonomic and modular function. One of the major updates is that the new DC Tromb Twin model is separable. The dust extractor and pre-separator are easily detached and re-assembled from each other making transport simple.

Other important updates include a simpler filter change system and a motor package that is easier to remove. As well as that, improved motors and a sturdier chassis mean that the whole range has gone through a major expansion and upgrade.

### Part No DC Tromb H 400

|        |    |                |
|--------|----|----------------|
| 171502 | c  | 115V, US       |
| 171507 | c  | 115V, CAN      |
| 171532 | L  | 115V, US       |
| 171537 | L  | 115V, CAN      |
| 172002 | a  | 115V US        |
| 172507 | cc | TWIN 115V, CAN |
| 172532 | cL | TWIN 115V, US  |
| 172537 | cL | TWIN 115V, CAN |
| 172552 | LL | TWIN 115V, US  |
| 172557 | LL | TWIN 115V, CAN |

1-phase



### Supplied with (Part No)

Connecting sleeve (2129)  
Coupling socket (2008)  
Suction hose antistatic (Ø50 mm /2") 5 m/16 ft (2013)  
Suction hose (Ø50 mm /2") 5 m /16 ft (2401) for model 171500 and 171508  
Floor nozzle B500 mm /W 19.7" (7238)  
Suction pipe (Ø50 mm /2") (7265)  
Fine filter, polyester (44017)  
HEPA H13 filter (44016)

### Discharge

a) 40 l /10.6 US gal container (40070)  
and 5 x plastic bags (42285)  
c) 10 x plastic bags (43619)  
L) Longopac 25 m /82 ft (432177)

### Technical data

|                                       |   |
|---------------------------------------|---|
| HxWxD [mm/in]                         | 1415x600x780/56x23x31                     |
| Weight [kg/lb]                        | a) 50/110.2<br>c) 46/101.4<br>L) 50/110.2 |
| Inlet Ø [mm/in]                       | 76/3                                      |
| Collection container [l/gal]          | a) 40/10.6<br>c) 20/5.3<br>L) Longopac    |
| Flow max, fan, EU [m³/h]              | 420                                       |
| Flow max, fan, UK 115V/230V [m³/h]    | 360/420                                   |
| Flow max, fan, US/CAN 115V [cfm]      | 212                                       |
| Negative pressure, max, EU/UK [kPa]   | 21 (+/- 10%)                              |
| Negative pressure, max, US/CAN [inwg] | 84  |
| Power 115/230V [W]                    | 2100/2680/3000                            |
| Sound level [dB(A)]                   | 70  |





707012

707011

707010

### Accessoires for DC Tromb Twin

With a DCF Tromb Kit you can transform a regular DC Tromb 400 a/c/L into a DC Tromb Twin! Installation is simple as the DCF Tromb Kit is pre-assembled and needs only to be connected to the dust separator using a screw set. The kit is available in a, c and L variants.

#### Note!

The installation of the DCF Tromb Kit is only possible with the new version of Tromb. Separately sold DCF Trombs cannot be connected to a DC Tromb 400. Please contact our customer service for more information.

With a DCF Tromb Kit you can connect the dust extractor DC Tromb Twin with the pre-separator DCF Tromb.

DCF Tromb Kit L (707010)  
DCF Tromb Kit c (707011)  
DCF Tromb Kit a (707012)

## DC Tromb<sup>H</sup> Twin

### Supplied with (Part No)

Antistatic hose set (Ø50 mm /2") mm x 7,5 m/25 ft  
(Part No 2013+2129+2008)  
Floor nozzle (B500 mm /W 19.7") (7238)  
Suction pipe (Ø50 mm /2") (7265)  
a-model (AA, AL) 5 x plastic bags (42285)  
c-model (CC) 10 x plastic bags (43619)  
L-model (CL) Longopac 25 m (432177)  
+ 10 x plastic bags (43619)  
Fine filter, polyester (44017)  
HEPA H13 filter (44016)

### Technical data

|                                       |                          |
|---------------------------------------|--------------------------|
| HxWxD [mm/in]                         | 1415x600x1280/56x23x50   |
| Weight [kg/lb]                        | cc) 71/157<br>cL) 80/177 |
| Inlet Ø [mm/in]                       | 76/3                     |
| Collection container [l/gal]          | C) 20/5.3<br>L) Longopac |
| Flow max, fan, EU [m³/h]              | 420                      |
| Flow max, fan, UK 115V/230V [m³/h]    | 360/420                  |
| Flow max, fan, US/CAN 115V [cfm]      | 212                      |
| Negative pressure, max, EU/UK [kPa]   | 21 (+/- 10%)             |
| Negative pressure, max, US/CAN [inwg] | 84                       |
| Power 115/230V [W]                    | 2100/2680/3000           |
| Sound level [dB(A)]                   | 70                       |

## Single-Phase Dust Extractors

# DC Tromb 600 L

The DC Tromb 600 is our most powerful single-phase dust extractor. It is designed to meet modern safety requirements and to work in conjunction with tools that have become ever more efficient and therefore produce more dust than they have previously. The maximum airflow is as high as 600 m<sup>3</sup>/h = 353 cfm, which is more than enough capacity for equipment such as large floor grinders and large electric cut-off saws.

Not only is the DC Tromb 600 compact, powerful and efficient, but it's versatile too. It is easy to transport around construction sites, move in stair-wells and lift into tight spaces. The wheels are puncture-proof and won't leave marks on the floor. The front wheels are lockable for working on uneven ground.

The DC Tromb 600 is adapted for all types of fine dust such as concrete (silica), plaster, wood and filler dust.

The machine comes equipped as standard with a fine filter (rinsable polyester) and an HEPA H13 filter that complies with OSHA regulations. A filter monitor shows the user when it's time to clean the filter. Filter cleaning can be done automatically during operation, or once the work has been completed.

### Part No DC 2900L

122015 115V, UL



### Supplied with (Part No)

Connecting sleeve (2129)  
Coupling socket (2008)  
Suction hose antistatic (Ø50 mm /2") 5 m/16 ft (2013)  
Floor nozzle B500 mm /W 19.7" (7238)  
Suction pipe (Ø50 mm /2") (7265)  
Fine filter, polyester (44017-2)  
HEPA H13 filter (44016-1)

### Technical Data

|  |                        |
|--|------------------------|
| HxWxD [mm/in]                                | 1600x600x800 /63x24x31 |
| Weight [kg/lb]                               | 65/143                 |
| Collection container [l/gal]                 | L) Longopac            |
| Flow max, fan, EU/US [m <sup>3</sup> /h/cfm] | 600/353                |
| Negative pressure, max, EU/US [kPa/inwg]     | 21 +/- 10%             |
| Power 230V /50Hz /60Hz [W]                   | 4050                   |



## New features!

- Easier filter change procedure.
- Tall cyclone & sturdy chassis.
- Quick coupling for filter change.
- Equipped with a HEPA H13 and a washable polyester filter.
- Semi automatic filter cleaning.

## Quick Response code for more info!



Scan the QR code and get more information about the different DC Tromb models, videos, guidelines and much more.

## Equipped with the Highest filtration!



All our mobile machines are equipped with a fine filter and a HEPA filter (H13) that clean the exhaust air to 99.95 %. These high-efficiency filters also have a long service life, which not only results in cleaner air, but also low filter costs.

The filter systems comply with the OSHA regulation, Annex AA, H-class, EN 60335-2-69.

# DC Tromb 600 Longopac

Efficient, powerful, ergonomic and flexible!

Semi-automatic filtration system.

Flexible cylinder head for HEPA H13 filters that facilitate service and maintenance.

An easier-to-remove cyclone for efficient maintenance during service or repair.

High quality and robust chassis.

Robust and flexible suction-pipe holder.



Microfilter/ HEPA H13 filter.

Protected shutter valve.

Locking ring for pre-filter.

Accordion hose for easier handling when changing filters.

Improved cable suspension.

New engine package for easier handling of service.



# A force to be reckoned with

## Speedy on-site working

Once on site, The DC Storm is just as simple to manoeuvre – even into previously hard-to-access locations. Quickly roll it to where it's needed, connect it to floor grinders, cutting tools, chisel hammers or saws, get the job done and move on.

## Fitted with HEPA H13 filter

Furthermore, The DC Storm is equipped with a fine filter which separates most of the dust. Then in order to capture close to 100% of the finest and most dangerous particles, DC Storm extractors are fitted with HEPA H13 filters.

The high-efficiency filters have a long service life, which not only results in cleaner air, but also low filter costs.

## H-Classified



The filter systems in all Dustcontrol dust extractors are built to comply with the the stringent IEC machine classification H. This means that all Dustcontrol extractors – comply with regulations governing environments that generate hazardous dust, like silica and asbestos.



**MAINT**

# Dust Extractors



**3-Phase  
Dust Extractors**

# STORM

## Powerful, reliable and safe mobile dust extraction

The DC Storm is a powerful and reliable mobile dust extractor. They are built on a robust and sturdy steel chassis for maximum durability, for example on construction sites. With a direct-driven, three-phase turbopump, the DC Storm is suitable for continuous operation, conveying heavy material away, source extraction and cleaning.

The DC Storm provides sufficient air flow for several users at the same time and it can also be used as a semi-mobile central unit in a tubing system. It is suitable for source extraction for grinding discs up to approx. 800 mm/ 31" in diameter.

Three basic models are available: bag (c), container (a) and longopac (L), each powered by a 10 hp motor.



### Part No DC Storm 600c

|        |                          |
|--------|--------------------------|
| 119407 | 460V /60Hz /10hp, US     |
| 119436 | 220/380V /60Hz /10hp, US |
| 119408 | 600V /60Hz /10hp, CAN    |

### Part No DC Storm 600a

|        |                          |
|--------|--------------------------|
| 119409 | 460V /60Hz /10hp, US     |
| 119437 | 220/380V /60Hz /10hp, US |
| 119410 | 600V /60Hz /10hp, CAN    |

### Part No DC Storm 600L PTFE

|        |                          |
|--------|--------------------------|
| 119434 | 460V /60Hz /10hp, US     |
| 119435 | 220/380V /60Hz /10hp, US |

## Three-Phase Dust Exctrators

# DC Storm 600

## DC Storm 600c

### Supplied with (Part No)

Coupling socket (2107)  
Coupling socket (2008)  
Suction hose antistatic (Ø50 mm /2")  
7.5 m/22 ft (2013)  
Floor nozzle B500 mm /W 19.7" (7238)  
Suction pipe (Ø50 mm /2") (7265)  
10 x plastic bags (46145)  
Fine filter, polyester (44212)  
HEPA H13 filter (42807)

### Technical data

|                                       |                            |
|---------------------------------------|----------------------------|
| HxWxD [mm/in]                         | 1790x780x1160/70.5x31x45.5 |
| Weight [kg/lb]                        | 201/443                    |
| Collection container [l/gal]          | 60/13.6                    |
| Flow max, fan, US/CAN [cfm]           | 353                        |
| Negative pressure, max, US/CAN [inwg] | 96                         |
| Power [hp]                            | 10                         |
| Sound level [dB(A)]                   | 75                         |



## DC Storm 600a

### Supplied with (Part No)

Coupling socket (2107)  
Coupling socket (2008)  
Suction hose antistatic (Ø50 mm /2")  
7.5 m/ 22 ft (2013)  
Floor nozzle B500 mm /W 19.7" (7238)  
Suction pipe (Ø50 mm /2") (7265)  
Container 75 l /20 US gal (7368)  
Fine filter, polyester (44212)  
HEPA H13 filter (42807)

### Technical data

|                                       |                            |
|---------------------------------------|----------------------------|
| HxWxD [mm/in]                         | 1790x780x1160/70.5x31x45.5 |
| Weight [kg/lb]                        | 203/447.5                  |
| Collection container [l/gal]          | 75/17                      |
| Flow max, fan, US/CAN [cfm]           | 353                        |
| Negative pressure, max, US/CAN [inwg] | 96                         |
| Power [hp]                            | 10                         |
| Sound level [dB(A)]                   | 75                         |



## DC Storm 600L PTFE

### Supplied with (Part No)

Coupling socket (2107)  
Coupling socket (2008)  
Suction hose antistatic (Ø50 mm /2")  
7.5 m/22 ft (2013)  
Floor nozzle B500 mm /W 19.7" (7238)  
Suction pipe (Ø50 mm /2") (7265)  
Longopac 25 m /82 ft (44077)  
Fine filter, PTFE (44081)  
HEPA H13 filter (42807)

### Technical data

|                                       |                            |
|---------------------------------------|----------------------------|
| HxWxD [mm/in]                         | 1790x780x1160/70.5x31x45.5 |
| Weight [kg/lb]                        | 201/443                    |
| Collection container [mm/ft]          | Longopac 20/65 flexible    |
| Flow max, fan, US/CAN [cfm]           | 353                        |
| Negative pressure, max, US/CAN [inwg] | 96                         |
| Power [kW]                            | 7.4                        |
| Sound level [dB(A)]                   | 75                         |



# TROMB

## DC Tromb Turbo



### Three-Phase Dust Extractors

With **direct start**

## DC Tromb Turbo

The DC Tromb Turbo is a medium sized dust extractor that expands the Tromb family. It is equipped with a powerful three-phase turbo motor which is suitable for heavy cleaning (38 mm/1.5" accessories) and is delivered with 7 m hose. Suitable for source extraction from medium sized power tools such as grinders, jack hammers and saws. Thanks to the tall cyclone, large filters and powerful motor package, it can handle large amounts of debris.

#### Part No DC Tromb Turbo a/c/L

|        |                       |
|--------|-----------------------|
| 173502 | a 4hp 460V /60Hz, US  |
| 173102 | c 4hp 460V /60Hz, US  |
| 173302 | L 4hp 460V /60Hz, US  |
| 173107 | c 4hp 600V /60Hz, CAN |



#### Supplied with (Part No)

Suction hose set, 7 m /23 ft, 5 m /16 ft (Ø50 mm /2") and 2 m /6.5 ft (Ø38 mm /1.5"), (2126)  
 Floor nozzle B450 mm (7236)  
 Suction pipe (Ø38 mm /1.5") (7257)  
 Connecting sleeve (2114)  
 Coupling socket (2107)  
 Fine filter, polyester (44017)  
 HEPA H13-filter (44016)  
 a-model 5 x plastic bags (42285)

#### Technical data

|  |  |
|--|--|
| HxWxD [mm/in]                              | 1390x600x840/55x23x33                                      |
| Weight [kg/lb]                             | a) Container 88/194<br>c) Bag 84/185<br>L) Longopac 86/190 |
| Collection container [l/gal]               | a) 40/10.6<br>c) 20/5.3<br>L) Longopac                     |
| Flow max, fan, US/CAN [m³/h /cfm]          | 315/186  |
| Negative pressure, max, US/CAN [kPa /inwg] | 28/112.4   |
| Power [hp]                                 | 4  |
| Sound level [dB(A)]                        | 72   |



# DC 5900 15hp P

DC 5900 15hp P, is a powerful machine with sufficient capacity to support up to three users simultaneously with tasks such as cleaning with Ø38mm cleaning equipment and two more operators with hand-held grinders, saws, drills or with two users with Ø50mm cleaning equipment.

The machine is especially suitable for placed in the basement and with a standing Ø76mm pipe or hose system installed as a riser in stairwells. At each floor, you can then effectively connect the machine's hose through a manifold with flap valve.

## Part no DC 5900 15hp P a/c/L

|        |   |                         |
|--------|---|-------------------------|
| 119301 | a | 75 l container          |
| 119305 | c | 60 l bag                |
| 119333 | L | Longopac                |
| 119336 | L | 460V /15hp 60Hz, US/CAN |
| 119314 | c | 460V /15hp 60Hz, US/CAN |
| 119315 | a | 460V /15hp 60Hz, US/CAN |
| 119316 | c | 600V /15hp 60Hz, US/CAN |
| 119317 | a | 600V /15hp 60Hz, US/CAN |

3-phase



## Supplied with (Part No)

### Discharge

- a) 75 l /20 US gal container (40070)
- c) 10 x plastic bags (46145)
- L) Longopac 25 m /82 ft (44077)

Fine filter, polyester (4292)  
HEPA H13 filter (42807)

**Optional HEPA filter:**  
HEPA H14 filter (42922)

## Technical data

|                                       |  |
|---------------------------------------|--|
| HxWxD [mm/in]                         | 1942x780x1160 /76x30x45                                |
| Weight [kg/lb]                        | 210/463  |
| Collection container [l/gal]          | a) Container 75/19.8<br>c) Bag 60/15.8,<br>L) Longopac |
| Flow max, fan, EU [m <sup>3</sup> /h] | 800  |
| Flow max, fan, US/CAN [cfm]           | 470.9  |
| Negative pressure, max, EU [kPa]      | 28   |
| Negative pressure, max, US/CAN [inwg] | 112  |
| Power [kW]                            | 9.2  |
| Sound level [dB(A)]                   | 75   |

## Accessoires for DC 5900 15hp P c/a

Adapt the DC 5900 c into the Longopac solution with the following kit:

Adaption Kit for Longopac Midi (44248)



# Compare our Dust Extractors

1-phase

## Dust extractor

| Technical data mini                       | DC 1800 a                      | DC 2900 a/c                    | DC 2900 L                     |
|---|--------------------------------|--------------------------------|-------------------------------|
| HxWxD [mm/in]                             | 780x405x390/31x16x15           | c) 1110x445x570/44x17x22       | 1600x600x800/63x24x31         |
| HxWxD [mm/in]                             |                                | a) 1145x445x630/45x17x25       |                               |
| Weight [kg/lb]                            | 14/31                          | c) 16/35 a) 22/48              | 63/143                        |
| Hose length Ø38 mm /1.5" [m/ft]           | 5/16                           | 5/16                           | 5/16                          |
| Collection container [l/gal]              | 20/5.2                         | c) 20/5.3 a) 40/10.6           | L) Longopac                   |
| Flow max, fan, US/CAN 115V [m³/h /cfm]    | 215/126.5                      | 215/126.5                      | 215/126.5                     |
| Negative pressure, max, US/CAN [kPa/inwg] | 21/84.3                        | 24/96.4                        | 24/96.4                       |
| Power [W]                                 | 1340                           | 1340                           | 1340                          |
| Sound level [dB(A)]                       | 68                             | 68                             | 80                            |
| Filter area, fine/HEPA filter             | 1.5 m² /0.85 m² 16 ft²/9.1 ft² | 1.5 m² /0.85 m² 16 ft²/9.1 ft² | 2.8 m² /3.3 m² 30 ft² /36 ft² |

## Dust extractor

| Technical data midi                       | DC Tromb H 400 a/c/L                | DC Tromb H 400 Twin cc/cL     | DC Tromb 600 L                |
|---|-------------------------------------|-------------------------------|-------------------------------|
| HxWxD [mm/in]                             | 1390x600x780/55x23x31               | 1390x600x1280/55x23x50        | 1390x560x70/55x22x27          |
| Weight [kg/lb]                            | a) 50/110.2 c) 46/101.4 L) 50/110.2 | cc) 71/168 cL) 80/173         | 63/143                        |
| Hose length Ø38 mm /1.5" [m/ft]           | 5/16                                | 5/16                          | 5/16                          |
| Collection container [l/gal]              | a) 40/10.6 c) 20/5.3 L) Longopac    | c) 20/5.3 L) Longopac         | L) Longopac                   |
| Flow max, fan, US/CAN 115V [m³/h /cfm]    | 360/212                             | 360/212                       | 600/353                       |
| Negative pressure, max, US/CAN [kPa/inwg] | 21 (+/- 10%) / 84.3                 | 21 (+/- 10%) / 84.3           | 21 (+/- 10%) / 84.3           |
| Power [W]                                 | 2100                                | 3000                          | 4050                          |
| Sound level [dB (A)]                      | 70                                  | 70                            | 70                            |
| Filter area, fine/HEPA filter             | 1.8 m²/1.5 m² 19.4 ft²/16 ft²       | 1.8 m²/1.5 m² 19.4 ft²/16 ft² | 1.8 m²/1.5 m² 19.4 ft²/16 ft² |

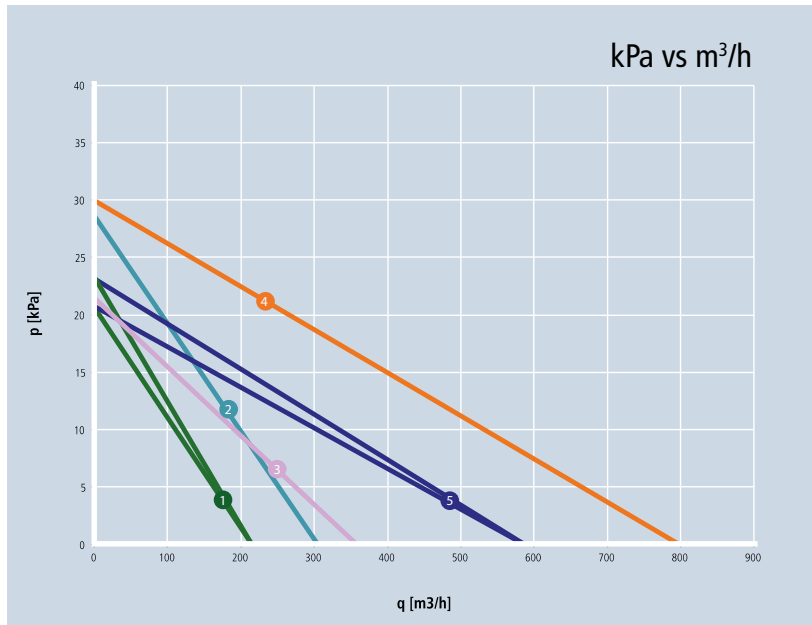
3-phase

## Dust extractor

| Technical data                            | DC Tromb Turbo Direct start      | DC Storm 600 a/c/L        | DC 5900 15 hp P           |
|---|----------------------------------|---------------------------|---------------------------|
| HxWxD [mm/in]                             | 1390x600x840/55x23x33            | 11790x780x1160/70x31x46   | 1942x780x1160/76x30x45    |
| Weight [kg/lb]                            | a) 88/194 c) 84/185 L) 86/190    | c) 210/463 a) 214/472     | 200/440.9                 |
| Hose length Ø38 mm /1.5" [m/ft]           | 5/16                             | 5/16                      | 5/16                      |
| Collection container [l/gal]              | a) 40/10.6 c) 20/5.3 L) Longopac | c) 60/15.9 a) 75/19.8     | c) 60/15.9 a) 75/19.8     |
| Flow max, fan, US/CAN [m³/h /cfm]         | 315/186                          | 600/353                   | 800/470.9                 |
| Negative pressure, max, US/CAN [kPa/inwg] | 28/112                           | 21/84                     | 28/112                    |
| Power [hp]                                | 4                                | 10                        | 15                        |
| Sound level [dB(A)]                       | 72                               | 75                        | 75                        |
| Filter area, fine/HEPA filter             | 3.6 m²/3.0 m² 39 ft²/32.3 ft²    | 5 m²/2.7 m² 54 ft²/29 ft² | 5 m²/2.7 m² 54 ft²/29 ft² |

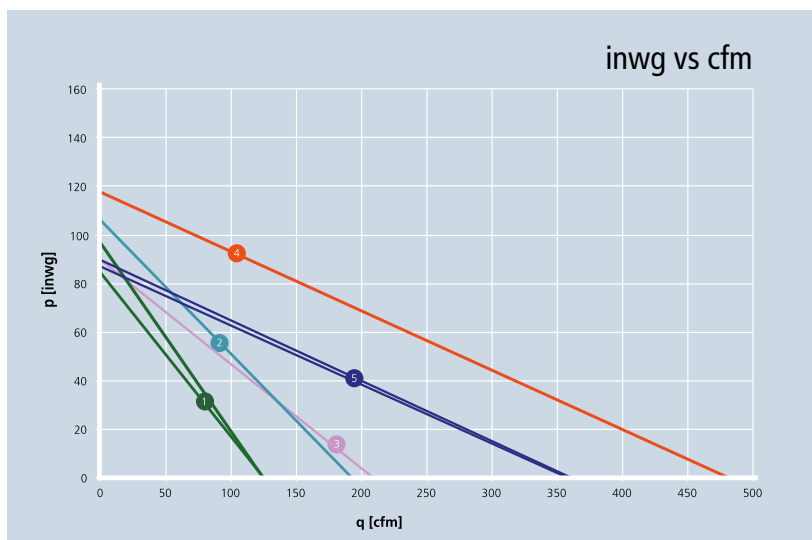
# Compare our Dust Extractors

## Pressure generation and airflow of our machines



kPa vs m<sup>3</sup>/h

- 1 DC 1800 (21 kPa/215 m<sup>3</sup>/h), DC 2900 (24/215)
- 2 DC 5900 15 hp P, DC Tromb Turbo Direct Start (28/315)
- 3 DC Tromb H 400 Twin, DC Tromb H 400 (21/360)
- 4 DC Storm LPG (30/820)
- 5 DC Tromb 600 (21/600), DC Storm 600 (24/600)



inwg vs cfm

- 1 DC 1800 (84 inwg/126 cfm), DC 2900 (96/126)
- 2 DC 5900 9.2 kW P, DC Tromb Turbo Direct Start (112/186)
- 3 DC Tromb H 400 Twin, DC Tromb H 400 (84/212)
- 4 DC Storm LPG (120/483)
- 5 DC Tromb 600 (84/353), DC Storm 600 (88/353)

# Semi-Mobile Systems



A semi-mobile system increases the accessibility to a powerful dust extractor on each floor. Instead of moving several small and large dust extractors around, multiple users can simultaneously connect their machines or power tools via a hose to a connection point.

# Semi-Mobile Systems

Semi-mobile dust collection systems are a practical solution when work is to be carried out on several floors and by several users at the same time. Each floor is connected to a central extraction system via a hose connection package and is equipped with a connection point for connecting the suction hose to the machine being used.

A Ø76 mm 1/3" hose that forms the main line is taken up through, for example, a lift shaft, refuse disposal chute or stairwell, and run to the dust extractor, which can in turn be connected to a pre-separator to collect larger particles, if necessary. One package is used for each floor to facilitate installation. The sound level is reduced and it becomes easy for each team to clean up regularly, once the task has been completed.



## The Branch Pipe and Hose Connection Package (Prod No 3353) consists of

- 1 x Rubber plug with chain (4016)
- 1 x Hose, 2.5 m, 76 l (2024)
- 2 x Joint Ø76 mm 1/3" (remove rubber ring) (3007)
- 2 x Tube Ø76 mm 1/3" \* 135 (3341)
- 1 x Screw 6\*40 (MC6S)
- 1 x Branch pipe 45°, Ø76 mm 1/3" (300311)
- 1 x Flap valve Ø50/76 mm 1/2"1/3" (3006)

## The Start Box (Prod No 8178)

The Hose Connection Package does not include electrical cables or the Start Box for vacuum producers (ordered separately).

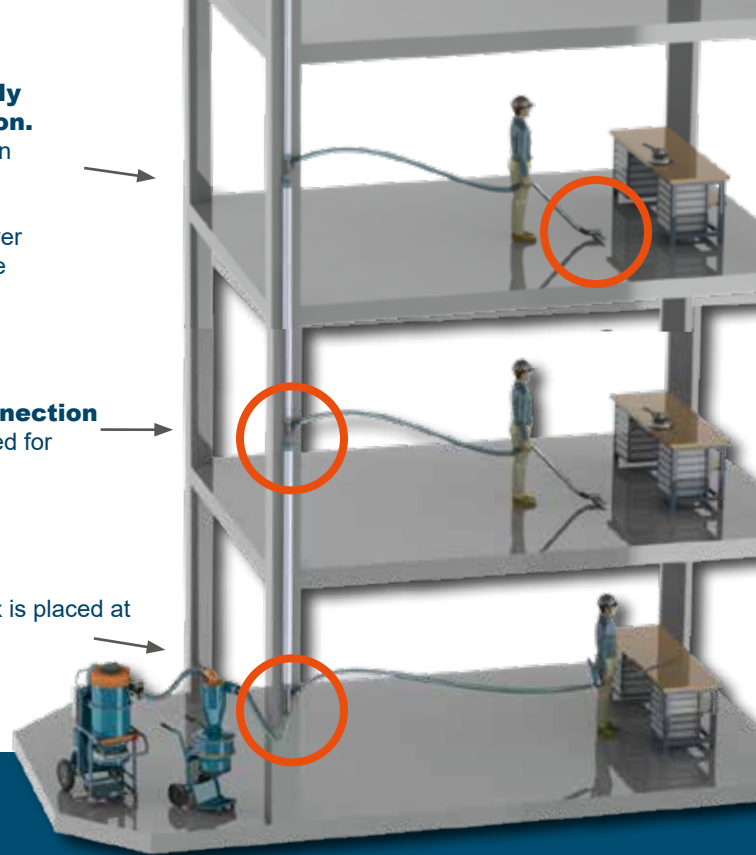
The Start Box (8178)

### Simultaneously Dust Extraction.

Several users can simultaneously connect their machines or power tools via the hose connection point.

One **Hose Connection Package** is used for each floor.

The **Start Box** is placed at the base level.



**Hose Connection Package** Part No 3353

**Start Box** Part No 8178

**Powerful Dust Extraction**

DC 5900 Part No 119320  
DCF Storm Part No 70701





# Air Cleaners



## Air Cleaner

# DC AirCube 500

DC AirCube 500 has been developed for ease of use and durability. The fan unit is a radial blower which is especially designed to build up high pressure across its entire flow range. This means that the unit generates a large amount of air flow during the entire lifetime of the filter. An exhaust hose can be used to create negative pressure in a sealed room. The fan has two speed settings, which means that the unit can be run economically, for example during the night.

### Supplied with (Part No)

HEPA H13 filter (42692)  
Pre-filter (42690)

### Part No DC AirCube 500

112500 230V /50Hz, EU  
112501 230V /50Hz, UK  
112503 115V /50Hz, UK  
112508 230V /50Hz, CH  
112505 115V /60Hz, US/CAN  
112509 230V /50Hz, AU

### Accessories (Part No)

Hose Ø125 (2420)  
Funnel connection (42753)  
Hose clamp (4138)  
Roof bracket (42724)

**Optional HEPA filter:**  
HEPA H14 filter (42925)

1-phase 

## Technical data

|   |                              |
|---|------------------------------|
| HxWxD [mm/in]                           | 380x340x495/<br>15x13.4x19.5 |
| Weight [kg/lb]                          | 13/28.7                      |
| Inlet Ø [mm/in]                         | 380x340/15x13.4              |
| Outlet Ø [mm/in]                        | 125/5                        |
| Power, fan 115/230 [W]                  | 195/210                      |
| Flow max, open inlet<br>115V [m³/h/cfm] | 470/276                      |
| Flow max, open inlet<br>230V [m³/h/cfm] | 500/294                      |
| Pre-filter area [m²/ft²]                | 0.18/1.9                     |
| HEPA filter area [m²/ft²]               | 4.56/49                      |
| Filter class                            | H13                          |
| Sound level [dB(A)]                     | 45-65                        |



### Accessories (Part No)

#### FILTERS FOR DC AIRCUBES

Go to page 185

#### HOSES & BENDS



Hose (42657)

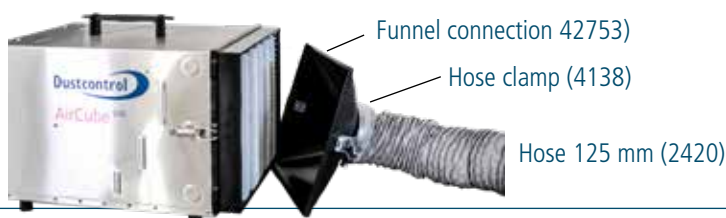
Bend 90° (42660)

#### TRANSPORT COVERS



Ø125 AirCube 500 (45168)    Ø250 AirCube 1200 (45169)    Ø315 AirCube 2000 (45170)

#### HOSES, FUNNEL CONNECTION & HOSE CLAMPS



Funnel connection 42753

Hose clamp (4138)

Hose 125 mm (2420)



## Air Cleaner

# DC AirCube 1200

The DC AirCube 1200 is a highly efficient and robust air cleaner with the ability to clean the air even in large rooms, at a rate of up to 1060 m<sup>3</sup>/h /624 cfm. The encapsulated fan housing contains a radial blower type fan that builds up high pressure across its entire flow range, which provides effective air cleaning for the entire lifetime of the filter. The speed of the fan is also continuously variable in order to save energy. The DC AirCube 1200 is equipped with both a HEPA H13 filter that captures the smallest particles and a light that indicates when it is time to replace the filter.

### Part No DC AirCube 1200

|        |                    |
|--------|--------------------|
| 103100 | 230V /50Hz, EU     |
| 103101 | 230V /50Hz, UK     |
| 103102 | 115V /50Hz, UK     |
| 103103 | 115V /60Hz, US/CAN |
| 103108 | 230V /50Hz, CH     |
| 103109 | 230V /50Hz, AU     |

1-phase



### Supplied with (Part No)

HEPA H13 filter (42940)  
Pre-filter (42918)

Optional HEPA filter:  
HEPA H14 filter (42924)

### Accessories (Part No)

Hose kit (42657)  
Bend 90° (42660)  
Transport cover (45170)

### Technical data

|  |                          |
|--|--------------------------|
| HxWxD [mm/in]  | 930x520x650/<br>37x21x26 |
| Weight [kg/lb]                                       | 23/51                    |
| Inlet/Outlet Ø [mm/in]                               | 250/315<br>10/14         |
| Power, fan 115/230 [W]                               | 375/385                  |
| Flow max, open inlet<br>230V [m <sup>3</sup> /h/cfm] | 1060/624                 |
| Pre-filter area [m <sup>2</sup> /ft <sup>2</sup> ]   | 0.40/4                   |
| HEPA filter area [m <sup>2</sup> /ft <sup>2</sup> ]  | 5/54                     |
| Filter class   | H13                      |
| Sound level [dB(A)]                                  | 60-68                    |

# DC AirCube 2000

With a capacity of approximately 1.850 m<sup>3</sup>/h /1089 cfm the DC AirCube 2000 is the Dustcontrol's most powerful cleaner. The DC AirCube 2000 has a robust, stainless-steel chassis and an encapsulated fan with variable speed setting. With its ergonomic design, it is easy to carry and transport. It can also be operated when positioned horizontally.

The DC AirCube 2000 has a HEPA H13 filter with an area totalling 10 m<sup>2</sup> /107 ft<sup>2</sup>. An integrated light indicates when it is time to replace the filter.

### Part No DC AirCube 2000

|        |                     |
|--------|---------------------|
| 103000 | 230V /50 Hz, EU     |
| 103002 | 230V /50 Hz, UK     |
| 103003 | 115V /50 Hz, UK     |
| 103004 | 115V /60 Hz, US/CAN |
| 103008 | 230V /50 Hz, CH     |
| 103009 | 230V /50Hz, AU      |

1-phase



### Supplied with (Part No)

HEPA H13 filter (42896)  
Pre-filter (42917)

Optional HEPA filter:  
HEPA H14 filter (42923)

### Accessories (Part No)

Hose kit (42657)  
Bend 90° (42660)  
Transport cover (45170)

### Technical data

|  |                           |
|--|---------------------------|
| HxWxD [mm/in]  | 1020x520x650<br>/41x21x26 |
| Weight [kg/lb]   | 30/67                     |
| Inlet/Outlet Ø [mm/in]                                   | 315/315<br>14/14          |
| Power, fan 115/230 [W]                                   | 375/750                   |
| Flow max, open inlet<br>230V [m <sup>3</sup> /h/cfm] max | 1850/1089                 |
| Pre-filter area [m <sup>2</sup> /ft <sup>2</sup> ]       | 0.6/6                     |
| HEPA filter area [m <sup>2</sup> /ft <sup>2</sup> ]      | 10/108                    |
| Filter class   | H13                       |
| Sound level [dB(A)]                                      | 60-68                     |



# Pre-Separators

# Pre-Separators

Pre-Separators can be used in all applications where the extracted material is coarse or voluminous. These can be placed in the actual workplace for separate handling or recovery of the extracted material, or centrally to relieve filter loading.

Pre-Separators separate material from the air flow using the action of a cyclone or with inertial separation.

The Cyclone Principle is very effective in separating particles down to 1/100 mm.

Inertial separators are generally configured as containers with the inlet and outlet in the same wall of the container. When the air flow changes direction abruptly, separation occurs for the particles with higher relative mass.

## When a Pre-Separator is to be used the following should be considered:

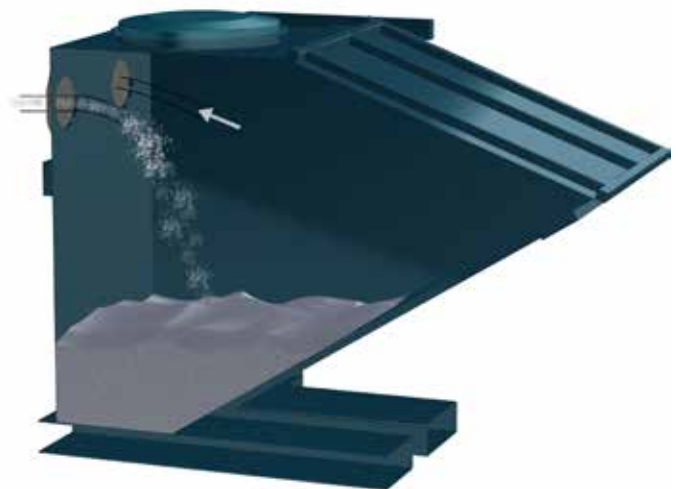
1. Type of dust to be handled.
2. How the unit should be placed and how emptying will be performed.
3. Expected airflow.

## Pre-Separators should be used:

- for material recovery.
- for material transportation.
- to reduce the loading on the ducting system.
- to relieve loading on the central filter.
- to reduce the risk of filter clogging.
- when fluids are to be separated.



**Cyclone Principle** meaning that the inlet is mounted tangentially on the body and the air flow is thus forced against the inside of the cyclone.



**Inertial Principle** meaning that the air stream flows into the container and abruptly changes course.

## Mobile Pre-Separators

# DCF Cyclone Separator Cover

When large quantities of dust are produced, a DC 5900, for example, can be supplemented with a cyclone separator cover that is fitted directly onto a standard barrel.

### Part No Description

7367 Cyclone separator cover

| TECHNICAL DATA  | DCF Storm |
|---|-----------|
| HxWxD [mm/in]   | 580/23    |
| Weight [kg/lb]  | 10/22     |
| Inlet/Outlet Ø [mm/in]  | 76/3      |
| Cyclone diameter Ø [mm/in]  | Ø250/10   |
| Barrel diameter Ø [mm/in]<br>(For a standard barrel 200/52.8 [l/gal]) | 620/24    |



## DCF 60

The DCF 60 Pre-Separator can handle large quantities of dust. Due to its large inlet the Pre-Separator is also well suited to separate coarse dirt. Perfect for wood floor grinding.

### Part No Description

7069 DCF 60 with wheel set

| TECHNICAL DATA               | DCF 60                |
|------------------------------|-----------------------|
| HxWxD [mm/in]                | 1060x380x380/42x15x15 |
| Weight [kg/lb]               | 10/22                 |
| Inlet Ø [mm/in]              | Ø62 /2.4              |
| Outlet Ø [mm/in]             | Ø50 /2                |
| Collection container [l/gal] | 55/14.5               |



## DCF 2900 c/L

The DCF 2900 Pre-Separator is often used in combination with the DC 2900 dust extractor to relieve the loading on the filter. Two models available, with bags (c) or with Longopac (L).

### Part No Description

7372 DCF 2900 c  
737200 DCF 2900 L

| TECHNICAL DATA               | DCF 2900 c/L          |
|------------------------------|-----------------------|
| HxWxD [mm/in]                | 1000x540x450/39x21x18 |
| Weight [kg/lb]               | c) 10/22 L) 15/33     |
| Inlet Ø [mm/in]              | Ø50/2                 |
| Cyclone diameter [mm/in]     | Ø250/10               |
| Collection container [l/gal] | c) 40/10 L) Longopac  |



### Supplied with (Part No)

42702 Plastic Bags  
44763 Longopac mini, 7 x 12 m/39ft



## Mobile Pre-Separators

### DCF Tromb with container

The DCF Tromb a/c/L is ideal for floor grinding and semi-mobile systems where large quantities of dust are handled. The pre-separator reduces the strain on the extraction source and is equipped with a intellibag/Longopac/container-solution for dust-free bag replacement, therefore allowing the user to avoid unnecessary and time-consuming shutdowns.

| TECHNICAL DATA               | DCF Tromb                |
|------------------------------|--------------------------|
| HxWxD [mm/in]                | 1415x600x780/56x23x31    |
| Weight [kg/lb]               | L) 32/70<br>C) 27/59     |
| Inlet Ø [mm/in]              | 76/3                     |
| Collection container [l/gal] | C) 20/5.3<br>L) Longopac |



#### Part No Description

|        |             |
|--------|-------------|
| 707002 | DCF Tromb a |
| 707001 | DCF Tromb c |
| 707000 | DCF Tromb L |



#### Supplied with (Part No)

- DCF Tromb a  
5 x plastic bags (42285)
- DCF Tromb c  
10 x plastic bag (43619)
- DCF Tromb L  
Longopac (432177)

### DCF Storm with Longopac

The DCF Storm is ideal for floor grinding and semi-mobile systems and could be set apart to handle large and heavy quantities of dust. The pre-separator relieves the loading on the filter in the vacuum source and is equipped with a Longopac solution for dust-free bag changing, so that the user can minimise unnecessary and time-consuming stoppages. Also available as a standard "c" model with an intellibag.

| TECHNICAL DATA              | DCF Storm            |
|-----------------------------|----------------------|
| HxWxD [mm/in]               | 185x70x108 /73x27x42 |
| Weight [kg/lb]              | 46/101               |
| Inlet Ø [mm/in]             | 108/4                |
| Flow max, fan, EU [m³/h]    | 700                  |
| Flow max, fan, US/CAN [cfm] | 412                  |



#### Part No Description

|       |             |
|-------|-------------|
| 70700 | DCF Storm c |
| 70701 | DCF Storm L |



#### Supplied with (Part No)

- DCF Storm c  
plastic bags (46145)
- DCF Storm L  
Longopac 25 m /82 ft  
(44077)

# Classification of Dust Extractors and HEPA Filters

Dust extractors are used to improve the working environment, and to reduce levels of hazardous dust in the air to a minimum. This places great demands on the ability of the dust extractor to separate fine dust. We use a fine filter in our mobile dust extractors, which separates most of the dust. But in order to capture close to 100% of the finest and most dangerous particles, we always complete the design with a HEPA H13 filter.

Here at Dustcontrol, we use conical pleated filters in all of our dust extraction units. A pleated filter has a very large area in relation to its physical size. The dust extractors can therefore be compact in relation to the large filter area they contain.

Only original Dustcontrol filters are tested and approved for use in our machines. The use of other types of filters could lead to the leaking of hazardous dust and/or machine breakdown. Dustcontrol's warranty only applies to machines equipped with original Dustcontrol spare parts. The filters are certified in accordance with current European requirements for dust extraction. This ensures that, with correct handling, optimum filtration will be achieved. Follow the instructions when handling filters, so that they can be replaced without exposure to hazardous dust.

To ensure that the filters comply with the requirements of relevant regulations for health and safety at work, a number of different testing standards are used. These are described below:

## Test methods

The test methods used in current standards for dust extractors and filters are always based on particle counting. By injecting particles before the filter and by using a particle counter to determine the concentration before and after the filter, the penetration can be calculated (a penetration of 0.1% is equal to a degree of separation of 99.9%). The test is carried out in several

stages by individually examining the filter media, the complete filter cartridge and, in some cases, also the complete unit.

## HEPA filters — High Efficiency Particulate Air Filters

When classifying HEPA filters, Dustcontrol uses the strict HEPA standard (EN 1822-1). It is divided into different levels (E10 to H14) depending on filtration efficiency. Dustcontrol applies level H13, which can separate up to 99.95% of the particles between 0.15 and 0.30  $\mu\text{m}$  in size. This particle size is used because it is the hardest to separate – both larger and smaller particles are easier to capture in a filter.

## Dust extractors

In IEC-60335-2-69 (EN-60335-2-69), the standard for testing wet and dry extractors, dust extractors are classified into three categories – **L for low, M for medium and H for high** – where the H category is the most stringent. (Please note: do not confuse this “H” with that in HEPA H13). The category required for a specific application is decided on the basis of the permitted maximum concentration for that type of dust (MAK) in the working environment or by local regulations.

## The test according to EN-60335-2-69 comprises two parts:

**1. A test of the filter system** – in our case, a fine filter and a HEPA H13 filter. To achieve category H, a degree of separation of 99.995% is required, where 90% of the test particles must be smaller than 1.0  $\mu\text{m}$ . Our fine filters comply with category M, and our HEPA H13 filters with category H.


**2. A test of the “assembled unit”** – in our case, a complete dust extractor. Here, 99.995% efficiency is also required, however 10% of the particles must be smaller than 1.0  $\mu\text{m}$ , 22% smaller than 2.0  $\mu\text{m}$ , and 75% smaller than 5.0  $\mu\text{m}$ .



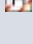


The filter systems in all Dustcontrol dust extractors are built to comply with the stringent IEC machine classification H.




## Classification of our Dust Extractors



| NAME          | CLASSIFICATION   | STANDARD       | EFFICIENCY | PARTICLE SIZE  | EXAMPLE   | MAK (Maximum Workplace Concentration)                                  |
|---------------|--|----------------|------------|----------------|-----------|--|
|               | L=  |                | > 99%      |                |           | > 1.0 mg/m <sup>3</sup>  |
|               | M=  |                | > 99,9%    |                |           | > 0.1 mg/m <sup>3</sup>  |
| IEC* standard | H=  | IEC 60335-2-69 | > 99.995%  | 0.1 - 5.0 µm** | H=99.995% | < 0.1 mg/m <sup>3</sup> and carcinogenic substances including asbestos |

\* IEC: International Electrotechnical Commission      \*\* Part 1: 90 % < 1.0 µm      Part 2: 10 % < 1.0 µm  
 22 % < 2.0 µm  
 75 % < 5.0 µm


## Classification of our HEPA filters



| NAME  | CLASSIFICATION | STANDARD  | EFFICIENCY | PARTICLE SIZE               | EXAMPLE            |
|-------|----------------|-----------|------------|-----------------------------|--------------------|
|       | E10            |           | 85%        | MPPS** between 0.15–0.30 µm |                    |
|       | E11            |           | 95%        |                             |                    |
|       | E12            |           | 99.5%      |                             |                    |
| HEPA* | H13            | EN 1822-1 | 99.95%     |                             | HEPA H13 = 99.95 % |

\* High Efficiency Particle Air filter, \*\* Most Penetrating Particle Size

## Introduction to HEPA 14 filters



### HEPA H14 is now available for our air cleaners and some of our mobile dust extractors

We have introduced a number of H14 filters in our assortment of filters, and when ordering these a certificate is included. See list to the right.

**Please note!** Our dust extractors will continue to be delivered with H13 filters, but if desired, the customer can order a filter of the H14 class.

Part no 42926 HEPAFILTER  
DC1800/DC2900 H14

Part no 42921 HEPAFILTER  
DC5900 4KW/5KW/5,5KW HEPA 14

Part no 42922 HEPAFILTER  
DC5900 9,2KW H14

Part no 42925 HEPAFILTER  
AIRCUBE 500 H14

Part no 42924 HEPAFILTER  
AIRCUBE 2000 CONICAL H14

Part no 42923 HEPAFILTER  
AIRCUBE 1200 H14

# Accessories and Consumables

A construction worker wearing a yellow hard hat, safety glasses, and a dark long-sleeved shirt is using a vacuum hose. The worker is in a long, brightly lit hallway with a row of windows on the right. The floor is dusty. In the foreground, a black and blue vacuum unit is visible, with the text 'Dustcontrol DC 1800' on it.


In order for you to get the most out of your Dustcontrol, you need the right accessories. We supply cleaning equipment in all sorts of designs and materials. If something is missing, we can even manufacture customised solutions. Please speak to your sales representative for more information.



# Cleaning accessories Ø 1.5"/38 mm



| No | Part No | Description  |
|----|---------|--|
| 1  | 7038    | Suction nozzle   |
| 2  | 7047    | Suction brush W 200 mm /7.8"                                     |
| 3  | 7048    | Pipe nozzle RB 100   |
| 4  | 7049    | Pipe nozzle RB 200   |
| 5  | 7276*   | Tapered nozzle   |
| 6  | 7365    | Flat nozzle  |
| 7  | 7257    | Suction pipe Ø38 mm/ 1.5"  |
| 8  | 7258    | Aluminium wand   |
| 9  | 7259    | Aluminium wand, with wear strip                                  |
| 10 | 7260    | Chrome steel extension wand, L = 715 mm /28"                     |
| 11 | 7261    | Aluminium extension wand, L = 705 mm /27"                        |
| 12 | 7264*   | Tapered nozzle   |
| 13 | 7213    | Chrome steel flat nozzle, L = 400 mm /15.7"                      |
| 14 | 7035    | Chrome steel hand pipe   |
| 15 | 7262    | Chrome steel hand pipe, curved                                   |
| 16 | 7235*   | Cast aluminium floor tool 370 mm /14.5"                          |
| 17 | 7236*   | Cast aluminium floor tool 450 mm/ 17.7"                          |
| 18 | 7320/21 | Moulded plastic floor tool 320 mm /12.6", with rubber wipe/brush |
| 19 | 7322/23 | Moulded plastic floor tool 370 mm /14.5", with rubber wipe/brush |
| 20 | 7300    | Rubber floor tool  |
| 21 | 7278*   | Suction brush  |
| 22 | 7275    | Rubber part of suction brush, 7278                               |
| 23 | 7263    | Brush for 7275, 7278   |
| 24 | 726301  | ESD brush for 7278, 7279   |
| 25 | 7398    | Brush for 7278, 7279, hard, white                                |
| 26 | 7237*   | Cast aluminium floor tool 370 mm /14.5", with wipe/brush         |

 \* To order an antistatic (ESD) version, add E to the end of Part No.

**MIDI**

**MAXI**

# Cleaning accessories Ø 2"/50 mm



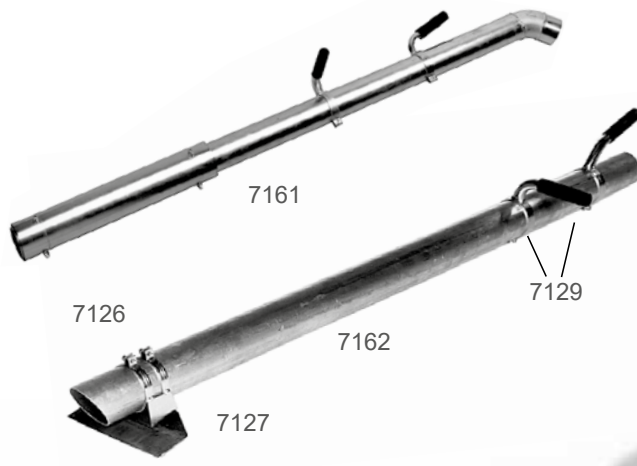
ERGO Grip for better ergonomoy.  
Fits on all Ø50 mm /2" suction  
pipes and Ø50 mm /2" bulk nozzle.



\* To order an antistatic (ESD) version,  
add E to the end of Part No.

| No | Part No | Description                             |
|----|---------|---|
| 1  | 7266    | Aluminium wand                          |
| 2  | 7267    | Aluminium wand, with wear strip         |
| 3  | 7265    | Chrome suction pipe Ø50 mm/ 2"          |
| 4  | 7268    | Chrome steel extension wand, 710 mm/28" |
| 5  | 7269    | Aluminium extension wand, 710 mm/28"    |
| 6  | 7033    | Chrome steel hand pipe                  |
| 7  | 7271    | Chrome steel hand pipe, curved          |
| 8  | 7285    | ERGO Grip handle                        |
| 9  | 7272*   | Tapered nozzle                          |
| 10 | 7277*   | Tapered nozzle                          |
| 11 | 7212    | Flat nozzle, L = 400 mm /15.7"          |
| 12 | 7295    | Bulk nozzle                             |
| 13 | 7013    | Rubber floor tool                       |
| 14 | 7281*   | Floor nozzle W 200 mm /7.8"             |
| 15 | 7238*   | Cast aluminium floor tool, 500 mm/19.6" |
| 16 | 7307    | Gulper floor tool, aluminium            |
| 17 | 7149    | Chip nozzle 50x70x243 / 1.9"x2.7"x9.6"  |
| 18 | 7030    | Suction nozzle                          |
| 19 | 7279*   | Suction brush                           |
| 20 | 7016*   | Suction nozzle with brush               |
| 21 | 7274    | Rubber part for suction brush           |
| 22 | 7263    | Brush for 7274, 7279                    |
| 23 | 726301* | ESD brush for 7278, 7279                |
|    | 7398    | Brush for 7278, 7279, hard, white       |

# Cleaning accessories Ø 3"/76 mm



| Part No | Description               |
|---------|---------------------------|
| 7126    | Clamp for scraper         |
| 7127    | Scraper for suction lance |
| 7129    | Handle, complete          |
| 7161    | Bulk nozzle               |
| 7162    | Suction lance             |





# Cleaning accessories Ø 1.5" /38 mm

## DC Reach – High Level Cleaning System

With our innovative cleaning technology DC Reach, it has never been easier to remove dust and combustible materials from high altitudes and hard-to-reach places. Traditionally, cleaning at height has involved hydraulic lifting aids, work platforms and at least two people to carry out the job safely. Now the task can be solved safely by one person.

The system consists of a pipe system with straight pipe parts and bends that are connected as desired. Along with this, there are several suction nozzles to meet the customer's unique needs.

In addition to the standard version of DC Reach, there is also DC Reach ATEX for customers who need equipment suitable for an ATEX environment. All these components are certified and meet the Atex-directive 2014/34/EU: ISO 80079-36:2016, ISO 80079-37 and are NFPA certified.

### Part No DC Reach System

|      |                   |
|------|-------------------|
| 7600 | DC Reach Standard |
| 7620 | DC Reach ATEX     |



### Standard Set

|      |                                      |
|------|--------------------------------------|
| 7601 | Pipe, Carbon fiber, L -1.25m x Ø38mm |
| 7602 | Bend 135 degrees                     |
| 7603 | Bend 90 degrees                      |
| 7604 | Bend 45 degrees                      |
| 7605 | Adaptor for Nozzle                   |
| 7606 | Adaptor for Hose                     |
| 7607 | Nozzle, W200mm                       |
| 7608 | Nozzle, W380mm                       |
| 7609 | Floor Nozzle, W300mm                 |
| 7611 | Bag for Pipes                        |
| 7613 | Bag for Accessories                  |
| 7615 | Nozzle, round                        |
| 7616 | Nozzle, elonged, W200                |

### DC Reach Standard Set Prod No 7600



### ATEX Set

|      |   |
|------|---|
| 7621 | 6 x ATEX Pipes, Carbon fiber, L - 1.25m x Ø38mm |
| 7622 | ATEX Floor Nozzle, W200mm                       |
| 7623 | ATEX Flat Nozzle                                |
| 7624 | ATEX Nozzle, W200mm                             |
| 7626 | ATEX Adaptor for Hose                           |
| 7627 | ATEX Bend 135 degrees                           |
| 7628 | ATEX Bend 90 degrees                            |
| 7629 | ATEX Bend 45 degrees                            |
| 7630 | ATEX Nozzle, straight                           |
| 7611 | Bag for Pipes                                   |
| 7613 | Bag for Accessories                             |

### DC Reach ATEX Set Prod No 7620



# About Suction Hoses

Hoses need to have different characteristics depending on their intended use. Dustcontrol supplies hoses for different applications:

- Wear-resistant, lightweight and flexible
- Durable for extremes of temperature
- Antistatic
- FDA approved

When using long suction hoses that are coupled together, the hose closest to the suction casing should be the one with the smallest diameter and it should be no longer than 9.8 ft / 3 m. Coupling should be carried out using external couplings.

## Antistatic accessories – ESD certification

ESD-accessories are certified according to Research Institute of Sweden (RISE).

## Our selection of Suction Hoses

| PRODUCT                                    | Part No | Dimension Ø [mm/in] | Standard length [m/ft]               | Colour      | Material | Temp °F / °C max/min | Anti-static/ESD | Abrasion resistance | UV and ozone resistance | Resistance to welding fumes | Resistance to solvent and oil | FDA |
|--|---------|---------------------|--------------------------------------|-------------|----------|----------------------|-----------------|---------------------|-------------------------|-----------------------------|-------------------------------|-----|
| Suction hoses, standard                    | 2001    | 76/3                | 10, 15 / 32, 49                      | Blue        | PE       | 140/-22/+60/-30      | No              | 2                   | 2                       | 3                           | 3                             |     |
|  | 2401    | 50/2                | 5,10,15,20,25,30 / 16,32,49,65,82,98 | Blue        | PE       | 140/-22/+60/-30      | No              | 2                   | 2                       | 3                           | 3                             |     |
|  | 2111    | 38/1.5              | 5,10,15,20,25,30 / 16,32,49,65,82,98 | Blue        | PE       | 140/-22/+60/-30      | No              | 2                   | 2                       | 3                           | 3                             |     |
|  | 2112    | 32/1.25             | 5,10,15,20,25,30 / 16,32,49,65,82,98 | Blue        | PE       | 140/-22/+60/-30      | No              | 2                   | 2                       | 3                           | 3                             |     |
|  | 2113    | 25/1                | 5,10,15,20,25,30 / 16,32,49,65,82,98 | Blue        | PE       | 140/-22/+60/-30      | No              | 2                   | 2                       | 3                           | 3                             |     |
| Suction hoses, heat-resistant              | 2004    | 50/2                | 5,10,15 / 16,32,49                   | Grey        | PP(EPDM) | 194/-40/+90/-40      | No              | 3                   | 2                       | 1                           | 4                             |     |
|  | 2003    | 38/1.5              | 5,10,15 / 16,32,49                   | Grey        | PP(EPDM) | 194/-40/+90/-40      | No              | 3                   | 2                       | 1                           | 4                             |     |
| Suction hoses, antistatic                  | 2024*   | 76/3                | 5,10,15 / 16,32,49                   | Black       | PE       | 140/-4/+60/-20       | Yes             | 2                   | 2                       | 3                           | 3                             |     |
|  | 2013*   | 50/2                | 5,10,15,20 / 16,32,49,65             | Black       | PE       | 140/-4/+60/-20       | Yes             | 2                   | 2                       | 3                           | 3                             |     |
|  | 2012*   | 38/1.5              | 5,10,15,20 / 16,32,49,65             | Black       | PE       | 140/-4/+60/-20       | Yes             | 2                   | 2                       | 3                           | 3                             |     |
|  | 2005*   | 32/1.25             | 5,10,15,20 / 16,32,49,65             | Black       | PE       | 140/-4/+60/-20       | Yes             | 2                   | 2                       | 3                           | 3                             |     |
|  | 2025*   | 25/1                | 5,10,15,20 / 16,32,49,65             | Black       | PE       | 140/-4/+60/-20       | Yes             | 2                   | 2                       | 3                           | 3                             |     |
| Hose, ATEX                                 | 2027*   | 38/1.5              | 5,10,15,20 / 16,32,49,65             | Black       | PE       | 140/-4/+60/-20       | Yes             | 2                   | 2                       | 3                           | 3                             |     |
|  | 2028*   | 50/2                | 5,10,15,20 / 16,32,49,65             | Black       | PE       | 140/-4/+60/-20       | Yes             | 2                   | 2                       | 3                           | 3                             |     |
| Suction hoses, PU extra abrasion-resistant | 2056    | 76/3                | 10/32                                | Transparent | PU       | 194/-40/+90/-40      | Yes**           | 1                   | 1                       | 3                           | 1                             |     |
|  | 2054    | 50/2                | 10/32                                |             | PU       | 194/-40/+90/-40      | Yes**           | 1                   | 1                       | 3                           | 1                             |     |
|  | 2055    | 38/1.5              | 10/32                                |             | PU       | 194/-40/+90/-40      | Yes**           | 1                   | 1                       | 3                           | 1                             |     |
| Super D superelastic                       | 2038    | 38/1.5              | 15/49                                | Black/white | PVC      | 185/-23/+85/-5       | No              | 2                   | 2                       | 2                           | 4                             |     |
|  | 2039    | 50/2                | 15/49                                | Black/white | PVC      | 185/-23/+85/-5       | No              | 2                   | 2                       | 2                           | 4                             |     |
| Suction hose                               | 44140   | 38/1.5              | 10/32                                | Transparent | PU       | -40 to +90           |                 | 2                   | 2                       | 2                           | 2                             | x   |
| Suction hose                               | 44141   | 50/2                | 10/32                                | Transparent | PU       | -40 to +90           |                 | 2                   | 2                       | 2                           | 2                             | x   |
| Suction hose                               | 44142   | 76/3                | 10/32                                | Transparent | PU       | -40 to +90           |                 | 2                   | 2                       | 2                           | 2                             | x   |

### Resistance Scale

- 1 Excellent
- 2 Good
- 3 Limited
- 4 Poor

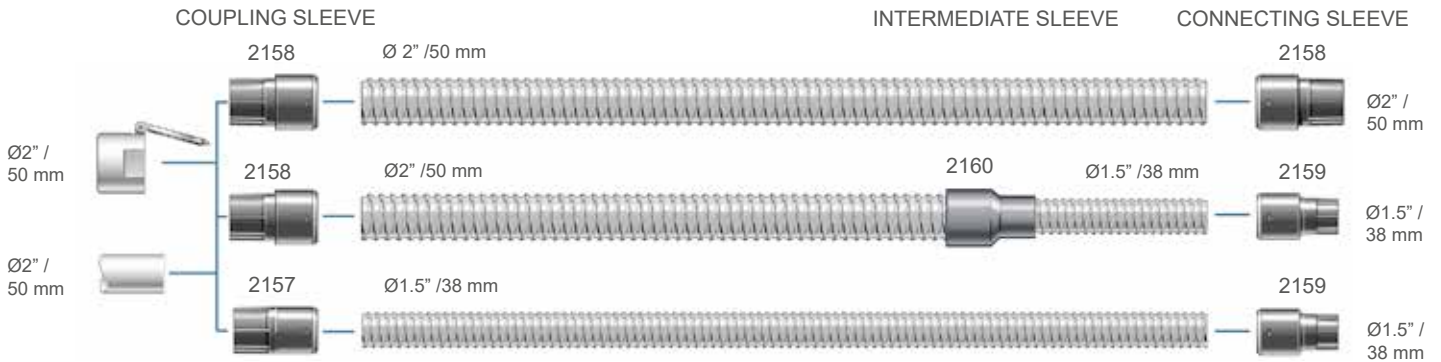


\* To order an antistatic (ESD) version, add the letter E to the end of the Part No.

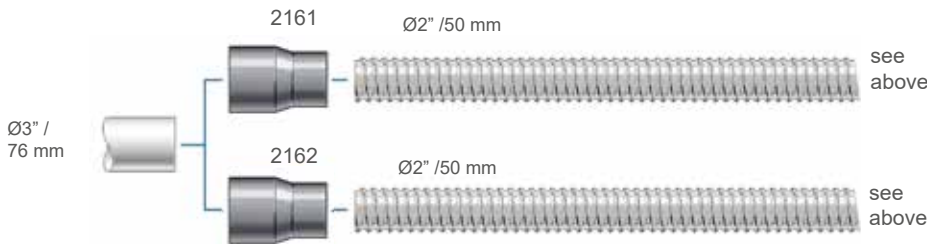
\*\* The wire helix must be bared and left in contact with conductive material for static discharge.

# Suction Hoses

## Turnable Connectors for PU section hoses

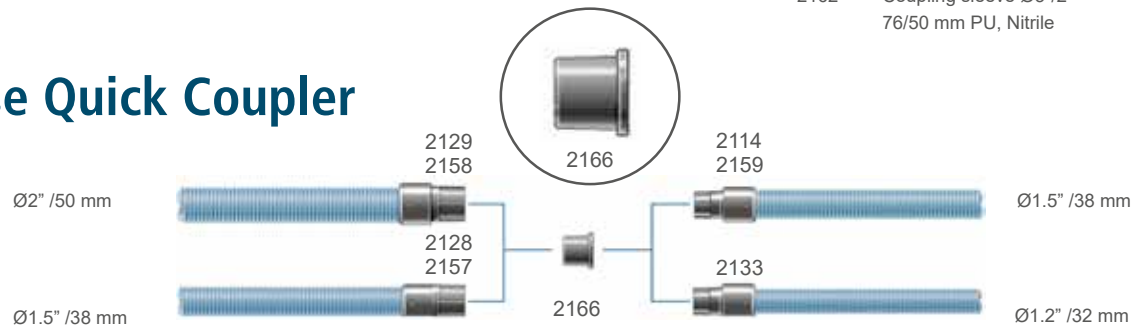


## Non-Turnable Connectors for PU Suction Hoses



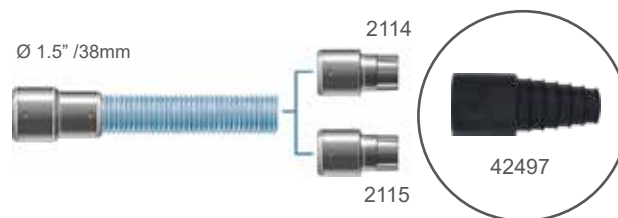
| Part No | Description   |
|---------|---|
| 2157*   | Coupling sleeve $\text{Ø} 2'' / 1.5''$ 50/38 PU, turnable       |
| 2158*   | Coupling sleeve $\text{Ø} 2'' / 2''$ 50/50 PU, turnable         |
| 2159*   | Connecting sleeve $\text{Ø} 1.5'' / 1.5''$ 38/38 PU, turnable   |
| Part No | Description   |
| 2160*   | Intermediate sleeve $\text{Ø} 2'' / 1.5''$ 50/38mm PU, turnable |
| 2161*   | Coupling sleeve $\text{Ø} 3'' / 2''$ 76/50 mm PU, EPDM          |
| 2162*   | Coupling sleeve $\text{Ø} 3'' / 2''$ 76/50 mm PU, Nitrile       |

## Suction Hose Quick Coupler



## Multi-Connection for Hand-held Power Tools with Integrated Suction Casings

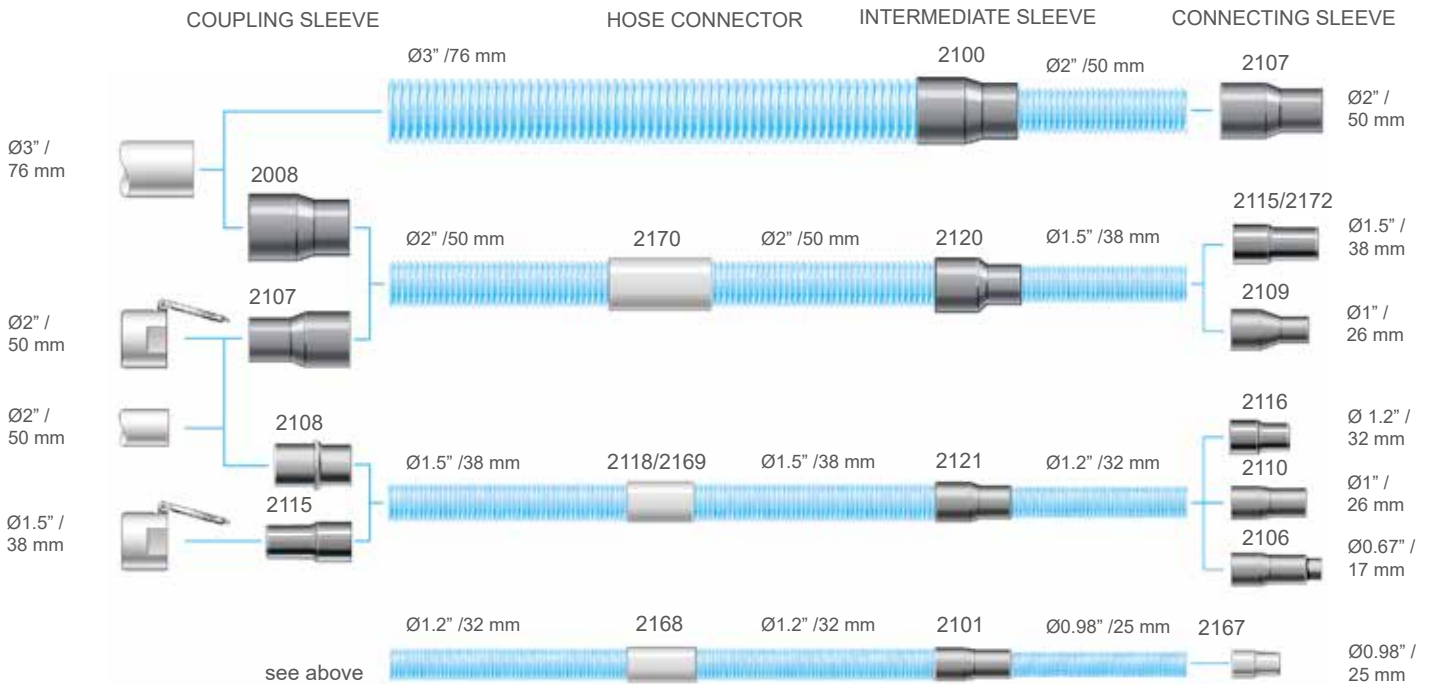
The multi-connection fits onto suction casings with an outlet diameter of 0.98-1.37 inch /25-35 mm. Cut off a section at the required diameter (it is pre-marked with: 25, 27, 29, 31, 33, 35 mm) and slip the multi-connection over the tubing. Connection sleeves 2114 or 2115 then fit onto the other end to connect the hose.



| Part No | Description  |
|---------|--|
| 42497*  | Multi-connection for hand-held power tools with integrated suction casings |
| 2114*   | Coupling socket $\text{Ø} 1.5'' / 1.5''$ 38/38 mm, turnable                |
| 2115*   | Coupling socket $\text{Ø} 1.5'' / 1.5''$ 38/38 mm                          |

# Suction Hoses

## Non-Turnable Hose Connectors



| Part No | Description   |
|---------|---|
| 2008*   | Coupling sleeve $\text{\O}3''/2'' / 76/50$          |
| 2100*   | Intermediate sleeve $\text{\O}3''/2'' / 76/50$      |
| 2101*   | Intermediate sleeve $\text{\O}1.2''/0.98'' / 32/25$ |
| 2106*   | Connecting sleeve $\text{\O}0.67''/1.2'' / 17/32$   |
| 2107*   | Coupling sleeve $\text{\O}2''/2'' / 50/50$          |
| 2108*   | Coupling sleeve $\text{\O}2''/1.5'' / 50/38$        |
| 2109*   | Connecting sleeve $\text{\O}1''/1.5'' / 26/38$      |

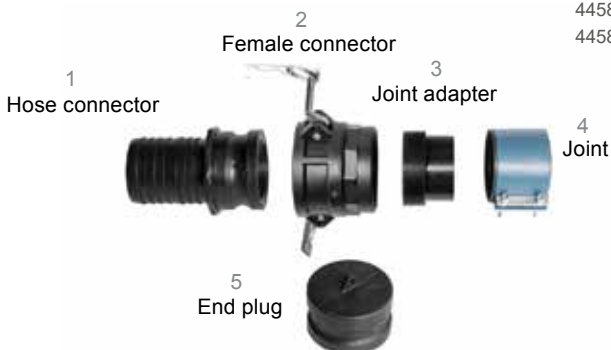
| Part No | Description  |
|---------|--|
| 2115    | Connecting sleeve $\text{\O}1.2''/1.2'' / 38/38$   |
| 2116    | Connecting sleeve $\text{\O}1.2''/1.2'' / 32/32$   |
| 2118    | Connecting sleeve $\text{\O}1.2''/1.2'' / 32/32$   |
| 2120*   | Intermediate sleeve $\text{\O}2''/1.5'' / 50/38$   |
| 2121*   | Intermediate sleeve $\text{\O}1.5''/1.2'' / 38/32$   |
| 2156*   | Coupling Nipple 75/72.5. 2156 is used to connect the 76 mm hose to flap valve, 76/76 art. 3237 |

| Part No | Description  |
|---------|--|
| 2167*   | Connecting sleeve $\text{\O}0.98''/0.98'' / 25/25$ |
| 2168*   | Hose connector $\text{\O}1.2'' / 32$               |
| 2169*   | Hose connector $\text{\O}1.5'' / 38$               |
| 2170*   | Hose connector $\text{\O}2'' / 50$                 |

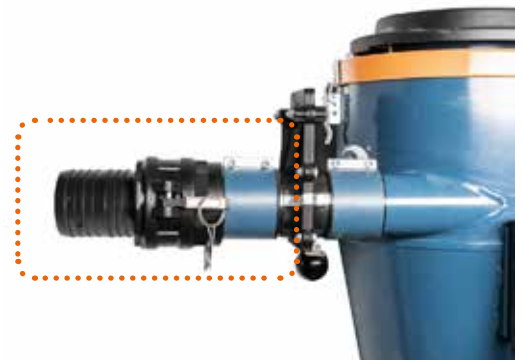


\*To order an antistatic (ESD) version, add E to the end of Part No.

## Camlock Retrofit Kit



| Part No | Description        |
|---------|--------------------|
| 44585   | CAMLOCK KIT 3" PP  |
| 44585-1 | CAMLOCK KIT 3" AL  |
| 44585-2 | CAMLOCK KIT 2" PP  |
| 44585-3 | CAMLOCK KIT 2" AL  |
| 44585-4 | CAMLOCK KIT 4" PP  |
| 44585-5 | CAM LOCK KIT 4" AL |





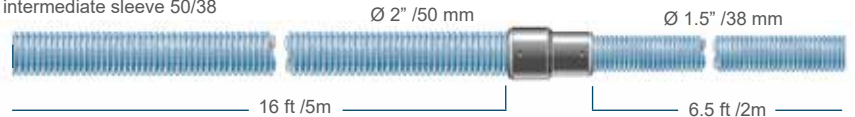
# Suction Hoses

## Hose Sets

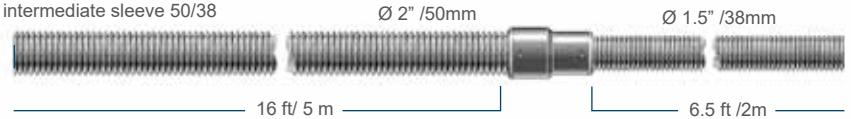
| Part No | Description  |
|---------|--|
| 2125    | Hose set Ø 50/38 L = 7 m<br>Ø 2"/1.5" L = 23 ft            |
| 2126    | Hose set Ø 50/38 L = 7 m<br>Ø 2"/1.5" L = 23 ft antistatic |
| 2006    | Hose set Ø 38 L = 2 m<br>Ø 1.5" L = 6.5 ft                 |
| 2015    | Hose set Ø 38/1.5" L = 2 m/6,5ft                           |
| 2105    | Hose set Ø 38/1.5" L = 5 m/16ft**                          |

\*\* Standard suction hose, turnable, non removable connector.  
(Replacement to standard hose kit)

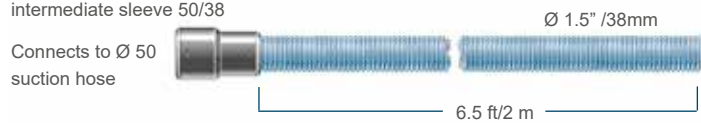
Standard suction hose, turnable  
intermediate sleeve 50/38



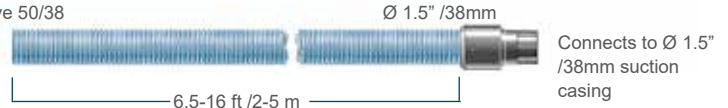
Antistatic suction hose, turnable  
intermediate sleeve 50/38



Standard suction hose, turnable  
intermediate sleeve 50/38



Standard suction hose, turnable  
intermediate sleeve 50/38



## Characteristics of Materials

| Description       | Dimension Ø inch/mm   | Part No | Colour | Material | Temp °F max/min/<br>Temp °C max/min | Antistatic | Abrasion<br>resistance | UV and zone<br>resistance | Resistance to<br>welding fume | Resistance to<br>solvent and oil |
|-------------------|-----------------------|---------|--------|----------|-------------------------------------|------------|------------------------|---------------------------|-------------------------------|----------------------------------|
| Coupling socket   | 3"/2"/76/50           | 2008*   | Black  | EPDM     | 284/-76/140/-60                     | Yes        | 2                      | 1                         | 2                             | 4                                |
|                   | 2"/2"/50/50           | 2107*   | Black  | EPDM     | 284/-76/140/-60                     | Yes        | 2                      | 1                         | 2                             | 4                                |
|                   | 2"/1.5"/50/38         | 2108*   | Black  | EPDM     | 284/-76/140/-60                     | Yes        | 2                      | 1                         | 2                             | 4                                |
|                   | 3"/2"/76/50 (PU)**    | 2161*   | Black  | EPDM     | 284/-76/140/-60                     | Yes        | 2                      | 1                         | 2                             | 4                                |
| Coupling socket   | 3"/2"/76/50           | 2162*   | Blue   | NBR      | 248/-76/120/-60                     | Yes        | 2                      | 3                         | 3                             | 2                                |
| Coupling socket   | 2"/2"/50/50           | 2129*   | Black  | PA12     | 284/-4/140/-20                      | Yes        | 1                      | 2                         | 3                             | 1                                |
|                   | 2"/2"/50/50 (PU)**    | 2158*   | Black  | PA12     | 284/-4/140/-20                      | Yes        | 1                      | 2                         | 3                             | 1                                |
|                   | 2"/1.5"/50/38 (PU)**  | 2157*   | Black  | PA12     | 284/-4/140/-20                      | Yes        | 1                      | 2                         | 3                             | 1                                |
|                   | 2"/1.5"/50/38         | 2128*   | Black  | PA12     | 284/-4/140/-20                      | Yes        | 1                      | 2                         | 3                             | 1                                |
|                   | 1.5"/1.25"/38/32      | 2133*   | Black  | PA12     | 284/-4/140/-20                      | Yes        | 1                      | 2                         | 3                             | 1                                |
|                   | 1.25"/1.25"/32/32     | 2171*   | Black  | PA12     | 284/-4/140/-20                      | Yes        | 1                      | 2                         | 3                             | 1                                |
| Connecting sleeve | 1.25"/1.5"/32/38      | 2132*   | Black  | PA12     | 284/-4/140/-20                      | Yes        | 1                      | 2                         | 3                             | 1                                |
|                   | 1.5"/1.5/38/38 (PU)** | 2159*   | Black  | PA12     | 284/-4/140/-20                      | Yes        | 1                      | 2                         | 3                             | 1                                |
|                   | 1.5"/1.5/38/38        | 2114*   | Black  | PA12     | 284/-4/140/-20                      | Yes        | 1                      | 2                         | 3                             | 1                                |
|                   | 2"/2"/50/50           | 2129*   | Black  | PA12     | 284/-4/140/-20                      | Yes        | 1                      | 2                         | 3                             | 1                                |
|                   | 1"/1"/25/25           | 2167*   | Black  | PA12     | 284/-4/140/-20                      | Yes        | 1                      | 2                         | 3                             | 1                                |
|                   | 1.5"/1.5/38/38        | 2115*   | Black  | PA12     | 284/-4/140/-20                      | Yes        | 1                      | 2                         | 3                             | 1                                |
| Connecting sleeve | 1"/1.5"/26/38         | 2109*   | Black  | EPDM     | 284/-76/140/-60                     | Yes        | 2                      | 1                         | 2                             | 4                                |
|                   | 1"/1.25"/26/32        | 2110*   | Black  | EPDM     | 284/-76/140/-60                     | Yes        | 2                      | 1                         | 2                             | 4                                |
|                   | .7"/1.25"/17/32       | 2106*   | Black  | EPDM     | 284/-76/140/-60                     | Yes        | 2                      | 1                         | 2                             | 4                                |
| Connecting sleeve | 1.25"/1.25"/32/32     | 2116    | Grey   | PE       | 45/-45                              | No         | 1                      | 2                         | 3                             | 1                                |
|                   | 1"/1"/25/25           | 2117    | Grey   | PE       | 45/-45                              | No         | 1                      | 2                         | 3                             | 1                                |
| Inter, sleeves    | 2"/1.5"/50/38         | 2131*   | Black  | PA12     | 284/-4/140/-20                      | Yes        | 1                      | 2                         | 3                             | 1                                |
|                   | 2"/1.5"/50/38 (PU)**  | 2160*   | Black  | PA12     | 284/-4/140/-20                      | Yes        | 1                      | 2                         | 3                             | 1                                |
| Inter, sleeves    | 3"/2"/76/50           | 2100*   | Black  | EPDM     | 284/-76/140/-60                     | Yes        | 2                      | 1                         | 2                             | 4                                |
|                   | 2"/1.5"/50/38         | 2120*   | Black  | EPDM     | 284/-76/140/-60                     | Yes        | 2                      | 1                         | 2                             | 4                                |
|                   | 1.5"/1.25"/38/32      | 2121*   | Black  | EPDM     | 284/-76/140/-60                     | Yes        | 2                      | 1                         | 2                             | 4                                |
|                   | 1.25"/1"/32/25        | 2101*   | Black  | EPDM     | 284/-76/140/-60                     | Yes        | 2                      | 1                         | 2                             | 4                                |
| Hose connector    | 2"/50                 | 2403    | Grey   | PE       | 45/-45                              | No         | 2                      | 2                         | 3                             | 3                                |
|                   | 1.5"/38               | 2118    | Grey   | PE       | 45/-45                              | No         | 2                      | 2                         | 3                             | 3                                |
|                   | 1.25"/32              | 2119    | Grey   | PE       | 45/-45                              | No         | 2                      | 2                         | 3                             | 3                                |
| Hose connector    | 2"/50                 | 2170*   | Black  | PA12     | 284/-4/140/-20                      | Yes        | 1                      | 2                         | 3                             | 1                                |
|                   | 1.5"/38               | 2169*   | Black  | PA12     | 284/-4/140/-20                      | Yes        | 1                      | 2                         | 3                             | 1                                |
|                   | 1.25"/32              | 2168*   | Black  | PA12     | 284/-4/140/-20                      | Yes        | 1                      | 2                         | 3                             | 1                                |

\* Antistatic is defined as having a conductivity of < 10<sup>6</sup> Ω

To order an antistatic ESD version, add the letter E to the end of the part no.

\*\* The wire helix must be bared and left in contact with conductive material

### Resistance Scale

- 1 Excellent
- 2 Good
- 3 Limited
- 4 Poor

# Suction Casings



## Capture Dust at the Source.

The suction casing is the key to an effective source extraction system. It must be lightweight and well designed, but it should also capture the dust efficiently and effectively.

Here we present our suction casings for the most common power tool types and manufacturers.

# Suction Casings



## Finding the right suction casing

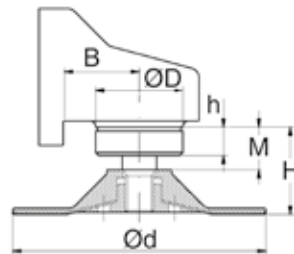
| Machine |   | Make |   |   | Type |   |
|---------|---|------|---|---|------|---|
| D       | d | H    | h | A | B    | M |

### Legend

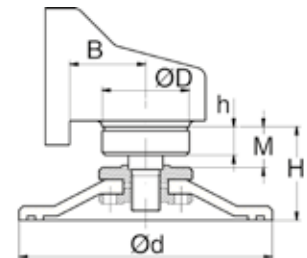
- F Fibre disc
- D Diamond cup grinding disc
- N Depressed centre disc
- K Abrasive disc, diamond disc
- S Abrasive cup stone

If you cannot find the suction casing you are looking for, contact your sales representative for pricing information regarding a product tailored to your specific needs.

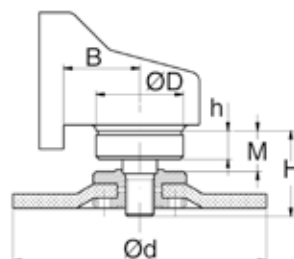
**F**  
Fibre Disc



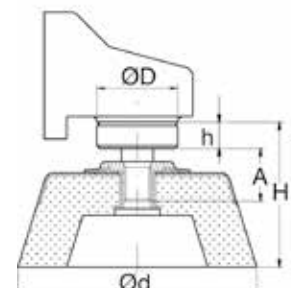
**D**  
Diamond Cup Grinding Disc



**N, K**  
Depressed Centre Disc,  
Abrasive Disc, Diamond Disc



**S**  
Abrasive Cup Stone



# Suction Casings

## Suction Casing Kit for Fibre Discs (F)

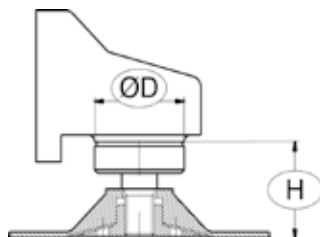
1

Measure the diameter of the disc.



2

Measure the diameter of the mounting collar on the machine -  $\varnothing D$  and the height of the machine - H.



3



### Technical data

| Disc diameter    | $\varnothing D$                       | H                  | Connection, $\varnothing$ | Part No. |
|------------------|---------------------------------------|--------------------|---------------------------|----------|
| 1½–3" (38–75 mm) | 1.1"/27                               | *                  | 1.25"/32 mm               | 6833*    |
| 4" (100 mm)      | 1.6"–1.9"/40–49                       | 1.5"–1.7"/39–44 mm | 1.25"/32 mm               | 6670     |
| 4½" (115 mm)     | 1.6"–1.9"/40–49                       | 1.5"–1.9"/39–48 mm | 1.25"/32 mm               | 6671     |
| 5" (125 mm)      | 1.6"–1.9"/40–49                       | 1.5"–1.9"/39–48 mm | 1.25"/32 mm               | 6672     |
| 5" (125 mm)      | 2"/50                                 | 1.5"–2.1"/38–61 mm | 1.25"/32 mm               | 6673     |
| 7" (175 mm)      | 2.1"–2.4"/54–61                       | 2"–2.3"/50–59 mm   | 1.5"/38 mm                | 6674     |
| 7" (175 mm)      | 2.4"–2.6" & 2.9"–3"<br>/62–65 & 74–77 | 2"–2.9"/50–73 mm   | 1.5"/38 mm                | 6675     |

\*\* Some Hitachi machines have a  $\varnothing 40$  mm /1.6" conical neck. With these, it is necessary to buy an aluminium ring (part no 6270). When fitted on the machine, this aluminium ring enlarges the  $\varnothing D$  of the machine to 50 mm /1.9" – therefore choose the 5" N, K suction casing kit – part no 6678.



# Suction Casings

## Suction Casing Kit for Diamond Cup Grinding Discs (D)

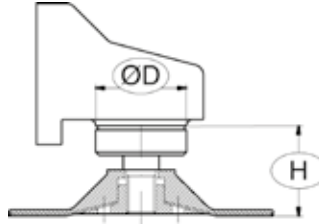
1

Measure the diameter of the disc.



2

Measure the diameter of the mounting collar on the machine -  $\varnothing D$  and the height of the machine - H.



3



### Technical data

| Disc diameter | $\varnothing D$                        | H                  | Connection, $\varnothing$ | Part No |
|---------------|--|--------------------|---------------------------|---------|
| 4½" (115 mm)  | 1.6"-1.9"/40-49 mm                     | 1.9"-2.1"/49-54 mm | 1.25"/32 mm               | 6681    |
| 5" (125 mm)   | 1.6"-1.9"/40-49 mm                     | 1.9"-2.8"/49-70 mm | 1.25"/32 mm               | 6682    |
| 5" (125 mm)   | 2"/50 mm                               | 1.5"-2.4"/38-61 mm | 1.25"/32 mm               | 6673    |
| 7" (175 mm)   | 2.1"-2.4"/54-61 mm                     | 2.5"-2.8"/63-72 mm | 1.5"/38 mm                | 6683    |
| 7" (175 mm)   | 2.4"-2.6" & 2.9"-3" / 62-65 & 74-77 mm | 2.5"-3.4"/63-86 mm | 1.5"/38 mm                | 6684    |

All suction cases should always be connected to a dust extractor while operating.



# Suction Casings

## Suction Casing Kit for Depressed Centre Discs, Abrasive Discs and Diamond Discs (N, K)

1

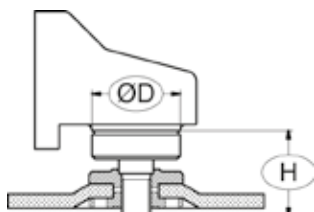
Measure the diameter of the disc.



Note: Max. thickness of disc = 18 mm.

2

Measure the diameter of the mounting collar on the machine  $\varnothing D$  and the height of the machine - H.



3



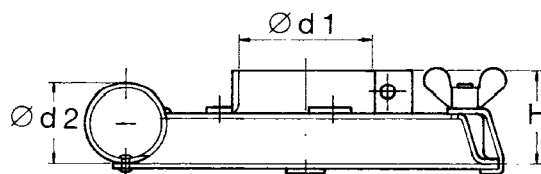
### Technical data

| Disc diameter          | $\varnothing D$    | H                  | Connection, $\varnothing$ | Part No. |
|------------------------|--------------------|--------------------|---------------------------|----------|
| 4 1/2" (115 mm)        | 1.6"-1.9"/40-49 mm | 1.2"-1.8"/31-46 mm | 1.25"/32                  | 6676     |
| 5" (125 mm)            | 1.6"-1.8"/40-45 mm | 1.2"-1.8"/31-46 mm | 1.25"/32                  | 6677**   |
| 5" (125 mm)            | 1.8"-2.1"/46-53    | 1.2"-1.8"/31-46 mm | 1.25"/32                  | 6678     |
| 7" (180 mm)            | Tailor-made        | Tailor-made        | 1.5"/38                   | *        |
| 9"                     | 4.4"/112 mm        | 1.5"/37 mm         | 1.5"/38                   | 6221*    |
| 9"                     | 2.7"/68 mm         | 2"/51 mm           | 1.5"/38                   | 6202*    |
| 9"                     | 2.9"/74 mm         | 2.1"/54 mm         | 1.5"/38                   | 6302*    |
| 9"                     | 2.9"/74 mm         | 1.5"/37 mm         | 1.5"/38                   | 6349*    |
| 9"                     | 2"/50 mm           | 1.9"/47 mm         | 1.5"/38                   | 6500*    |
| 9"                     | 2.4"/62 mm         | 2.1"/54 mm         | 1.5"/38                   | 6416*    |
| 9"                     | 2.4"/62 mm         | 2"/50 mm           | 1.5"/38                   | 6438*    |
| 9"                     | 2.4"/62 mm         | 1.9"/48 mm         | 1.5"/38                   | 6555*    |
| 9"                     | 2.6"/65 mm         | 1.6"/40 mm         | 1.5"/38                   | 6842*    |
| 9"                     | 2.5"/64 mm         | 2"/52 mm           | 1.5"/38                   | 6427*    |
| 9"                     | 2.3"/58 mm         | 2.1"/54 mm         | 1.5"/38                   | 6537*    |
| Georges Renault KL 365 | 9"                 | 2.3"/59 mm         | 1.5"/38 mm                | 6388*    |

\* With the clamping rings welded on the suction casings.

\*\* Some Hitachi machines have a  $\varnothing 40$  mm conical neck. With these, it is necessary to buy an aluminium ring (part no 6270). When fitted on the machine, this aluminium ring enlarges the  $\varnothing D$  of the machine to 50 mm – therefore choose the 5" N, K suction casing kit – part no 6678.

### Connection $\varnothing$



# Suction Casings

## Suction Casing Kit for Abrasive Cup Stone (S)

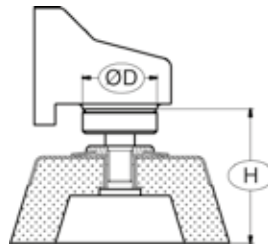
1

Measure the diameter of the disc.



2

Measure the diameter of the mounting collar on the machine  $\varnothing D$  and the height of the machine - H.



3



### Technical data

| Disc diameter | $\varnothing D$  | H                 | Connection, $\varnothing$ | Part No |
|---------------|------------------|-------------------|---------------------------|---------|
| 5" (125 mm)   | 1.9-3"/ 50-77 mm | 1.8-3.2"/46-81 mm | 1.5"/38 mm                | 6680    |
| 6" (150 mm)   | 74-77 mm         | 46-81 mm          | 1.5"/38 mm                | 6023    |

## Reciprocating Saw – Suction casings C



All suction cases should always be connected to a dust extractor while operating.



### Technical data

| Machine model   | Connection, $\varnothing$ (mm) | Part No |
|---|--------------------------------|---------|
| Atlas Copco SSE 1000 X/SQ/, Milwaukee 65xx-xx (Sawzall) | 1.5" /32                       | 6290    |
| Milwaukee 6378  | 1.5" /32                       | 6269    |

# Suction Casings

## Suction Casing for Hammer Drills, Chisels and Breakers



Part No 7033 Chrome steel hand pipe Ø50



### + Suction casings B, H, M, L

| No | Part No     | Connection tool Ø              | Hose connection Ø | Height       |
|----|-------------|--------------------------------|-------------------|--------------|
| 1  | 6621        | 1.89"/48 mm                    | 1.5"/38 mm        | 6.22"/158 mm |
| 2  | 6622        | 1.69"/43 mm                    | 1.5"/38 mm        | 6.22"/158 mm |
| 3  | 6077        | 1.26"/32 mm                    | 1.26"/32 mm       | 4.4"/112 mm  |
| 4  | 6078        | 2.4"/61 mm                     | 1.5"/38 mm        | 7"/178 mm    |
| 5  | 6001 (7033) | -                              | 2"/50 mm          | 3.9"/100 mm  |
| 6  | 6130        | Bellow for 6078, 6621 and 6622 |                   |              |

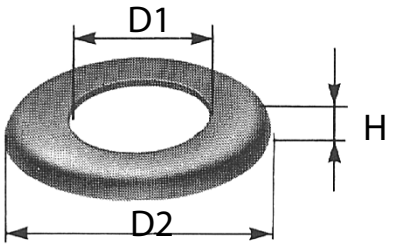
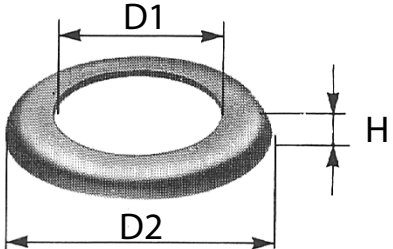
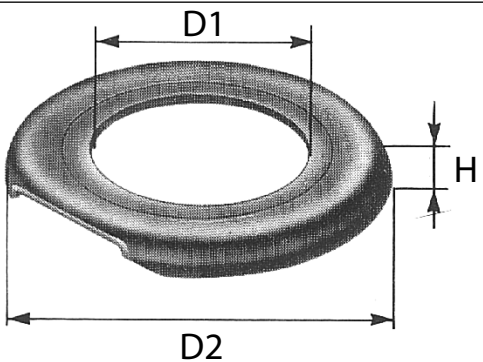
Part No 6622 and 6077 are suitable for small chisel hammers.

### + Model-specific suction casings

| Part No | Model                     | Hose connection Ø |
|---------|---------------------------|-------------------|
| 6229    | Atlas Copco RRD 37/RRD 57 | 1.5"/38 mm        |
| 6152    | Atlas Copco BBD 11/RRC 73 | 1.5"/38 mm        |



# Suction Casings Spare Parts for Suction Casings

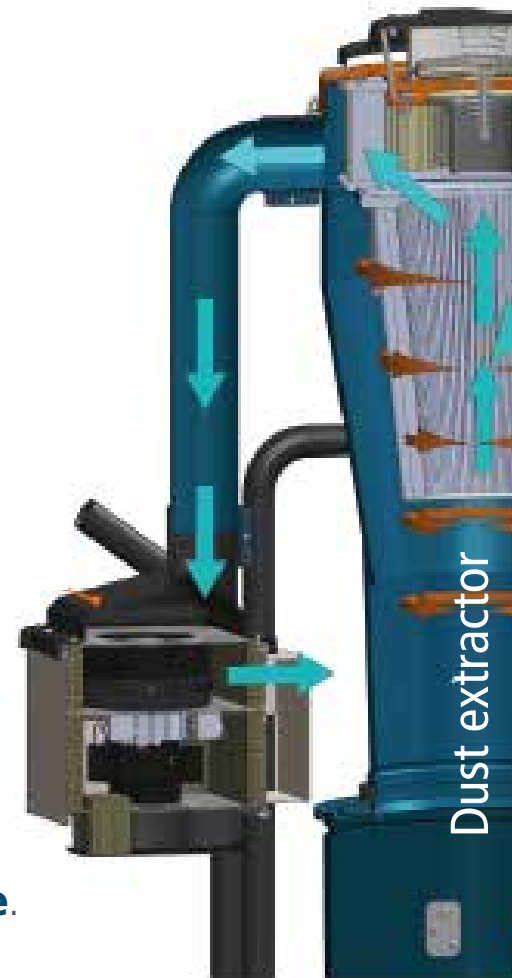
|    | Description                                   | Dimension   |   |   | Part No.   |  |
|---|---|---|---|---|--|--|
|   |   | D1<br>in/mm   | D2<br>in/mm   | H<br>in/mm  |  |  |
|   | Plastic ring for saucer grinder               | 5S<br>6S  | 4.8"/121<br>5.8"/147  | 5.5"/139<br>6.5"/164  | 2"/50<br>2"/50   | 6003<br>6004   |
|   | Rubber collar for fibre disc (F)              | 1 1/2 F<br>2 F<br>3 F<br>4 F<br>4 1/2 F<br>4 1/2 F<br>5 F | 1.5"/39<br>1.5"/39<br>1.5"/39<br>2.8"/72<br>2.8"/72<br>2.8"/72<br>2.8"/72 | 2.3"/59<br>2.7"/69<br>3.7"/95<br>4.6"/117<br>5.3"/135<br>5.3"/135<br>5.7"/145 | 0.9"/23<br>0.9"/23<br>1" /25<br>0.5"/13<br>0.5"/13<br>0.9"/23<br>0.5"/13 | 6314<br>6313<br>6312<br>6182<br>6181<br>618100<br>6195 |
|  | Rubber collar for fibre disc (F)              | 5 F   | 3.8"/96   | 5.9"/150  | 0.6"/15  | 6006   |
|  | Rubber collar for oscillating sanding machine | 5 O<br>6 O  | 2.8"/72<br>3.8"/96  | 5.7"/145<br>6.7"/170  | 1.5"/38<br>1.1"/28   | 6212<br>6180   |
|  | Rubber collar for fibre disc (F)              | 7 F<br>7 F<br>8 F<br>9 F                                  | 4.4"/112<br>4.4"/112<br>4.4"/112<br>4.5"/113                              | 7.7"/196<br>7.7"/196<br>8.7"/221<br>10"/250                                   | 7"/19<br>1.4"/35<br>1.6"/41<br>1.25"/32                                  | 6002<br>6034<br>6211<br>6039                           |

# Choose the Right Filter

**Pleated design** increases the filtering surface. For filtering to be effective without affecting user performance, the air velocity through the filter must be maintained but without overloading the volume capacity of the filter media. Suitable filter loadings vary with the material being extracted. Suitable filter loading, measured in  $\text{m}^3/\text{hr}$  per  $\text{m}^2$  of filter area, for concrete dust is for example, a maximum of  $120\text{m}^3/\text{hr}$  per  $\text{m}^2$ , while welding fume is only  $60\text{m}^3/\text{hr}$  per  $\text{m}^2$  as it exerts a higher filter loading or simply put, it will block the filters more quickly. This is always considered in Dustcontrol's design criteria.

Our dust extractor separates dust in three stages:

1. Large particles are separated dynamically in the **Cyclone**.
2. Filtration then takes place in the pleated **Fine Filter**.
3. Followed by a pleated **Microfilter** HEPA H13.



**The Fine Filter.** This filter is designed to capture the small particles that are not captured in the pre-separator or cyclone.



#### Cellulose Fine Filter

A high-quality, standard filter with high filtration efficiency. Epoxy-treated for improved resistance to humidity and other elements. It is pleated around a support cylinder.



#### Polyester Fine Filter

A high-quality filter resistant to most substances. Perfect for use in wet environments such as mechanical workshops in which cutting fluids etc. is used. Slightly smoother surface than the cellulose filter, enabling more efficient cleaning and a longer service life. The filter is washable.



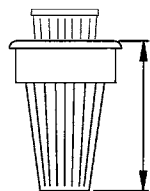
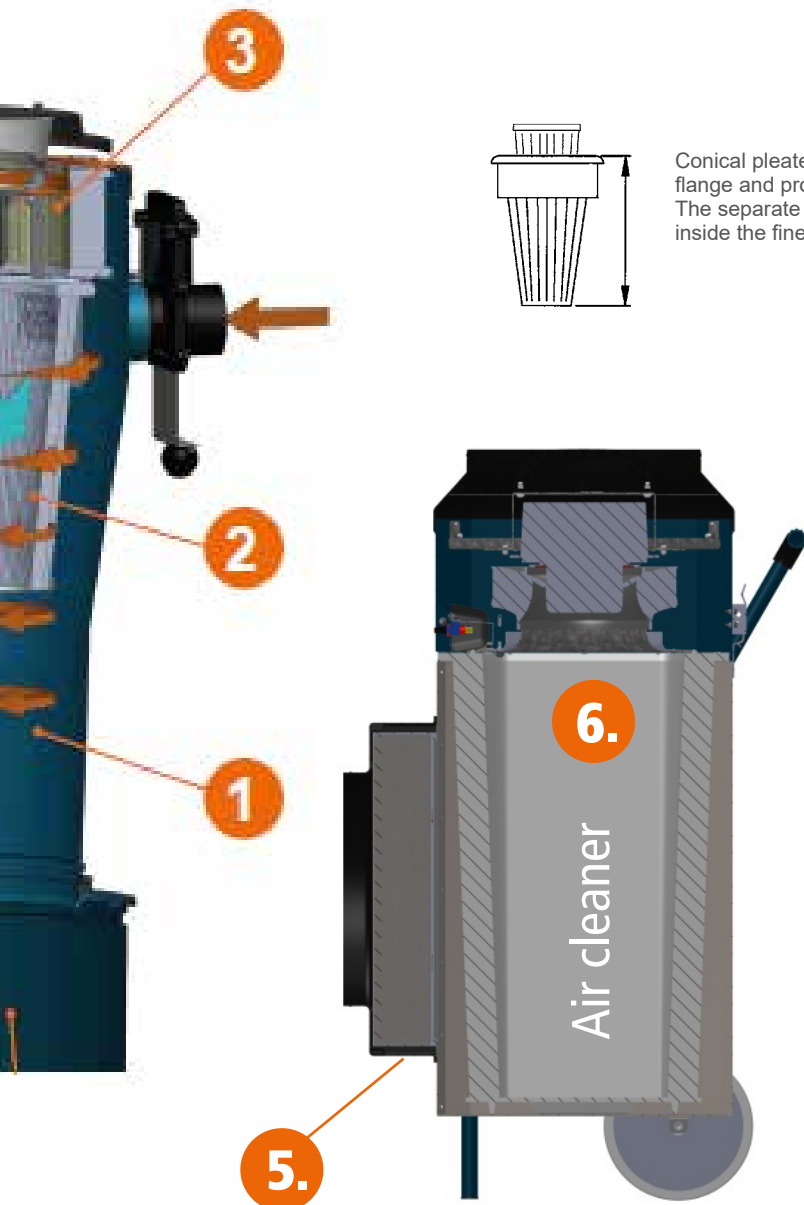
#### PTFE Fine Filter

The polyester filter is treated with PTFE, meaning that the filter coating can easily be separated from the surface. This type of filter is suitable for use in applications such as floor grinding. The filter is washable.



#### A Pre-Filter

A basic filter used with air cleaners in order to capture large particles and relieve the loading on the HEPA filter. The pre-filter is designed as a pleated filter in cassette or textile form. It is disposable. Each Pre-Filter filter is individually tested for level G4 compliance.



Conical pleated filter with sealing flange and protective jacket. The separate HEPA filter is fitted inside the fine filter.



Air cleaner

Our Air cleaners separate dust in two stages:

- 4. Large particles are separated by the **Carpet Pre-filter**, or a
- 5. **Pre-filter cartridge**,
- 6. followed by a pleated **HEPA H13 Microfilter**

**Microfilter, HEPA filter, Absolute Filter** goes by many names, and has a filtration efficiency of 99.995%.

**PLEASE NOTE!** We are now introducing HEPA H14 filters as an additional part no for our air cleaners and some of our dust extractors. Go to page 38-39 for more info.



**A HEPA Filter**

The HEPA filter is assembled from a very fine-meshed fibreglass textile with extremely deep-acting properties. One or two layers of e.g. cellulose may be added to improve rigidity.

Each HEPA filter is individually tested for level H13 compliance. The test report can be obtained on request.

Dustcontrol's HEPA filters comply with the requirements for H-class dust extractors. The HEPA filter should be replaced when it becomes saturated.

All Dustcontrol's dust extractors and air cleaners, have a separate HEPA H13 filter installed after the fine filter or pre-filter. The filter systems in all Dustcontrol dust extractors are built to comply with the the stringent IEC machine classification H.

**DC Tromb, DC Tromb Twin, DC Tromb Turbo, DC Tromb Turbo Twin, DC Tromb Turbo EX, DC Tromb Asbestos, DC Tromb Turbo VFD Asbestos, DC Chip Extractor, DC Tromb Stationary, DC Tromb TR EX**

| Part No | Type of filter / Machine  | Construction                    | Material                 | Area [m <sup>2</sup> /ft <sup>2</sup> ] | Classification           | Max temp     |
|---------|---|---------------------------------|--------------------------|---|--------------------------|--------------|
| 44017   | Fine filter, DC Tromb/Turbo/Twin, DC Turbo E, DC Tromb Turbo VFD Asbestos, DC Chip Extractor, Tromb Stat. | Pleated around support cylinder | Polyester                | 1.85 /20                                | IEC EN 60335-2-69 Part 1 | 176°F/80°C   |
| 44017-1 | Fine filter, DC Tromb Turbo/TR EX   | See above                       | Polyester, antistatic    | 1.85 /20                                | IEC EN 60335-2-69 Part 1 | 176°F/80°C   |
| 44043   | Fine filter   | Pleated around support cylinder | Cellulose, epoxy-treated | 1.85 /20                                | IEC EN 60335-2-69 Part 1 | 176°F/80°C   |
| 44213   | Fine filter, PTFE   | Pleated around support cylinder | Polyester, PTFE          | 2.5 /30                                 | IEC EN 60335-2-69 Part 1 | 266°F /130°C |
| 44016   | HEPA filter, DC Tromb/Turbo/Twin, DC Tromb Turbo/TR EX, DC Tromb Turbo VFD Asbestos, DC Chip Extractor    | Pleated                         | Cellulose, fibreglass    | 2.2 /23.7                               | HEPA H13 EN 1822-1       | 176°F/80°C   |
| 44016-1 | HEPA filter, DC Tromb 600   | Pleated                         | Cellulose, fibreglass    | 3.3 /35.6                               | HEPA H13 EN 1822-1       | 176°F/80°C   |
| 44017-2 | Fine filter, DC Tromb 600   | Pleated around support cylinder | Polyester                | 2.8 /30.2                               | IEC EN 60335-2-69 Part 1 | 176°F/80°C   |

**DC 3800 I, DC Tromb TR EX, DC 4000 PCB**

| Part No | Type of filter / Machine                | Construction | Material              | Area [m <sup>2</sup> /ft <sup>2</sup> ] | Classification           | Max temp     |
|---------|---|--------------|-----------------------|---|--------------------------|--------------|
| 42025   | Fine filter, DC 3800 I, DC 4000 PCB     | Pleated      | Polyester             | 1.8 /19.4                               | IEC EN 60335-2-69 Part 1 | 266°F /130°C |
| 42025ST | Fine filter x 24                        | Pleated      | Polyester             | 1.8 /19.4                               | IEC EN 60335-2-69 Part 1 | 266°F /130°C |
| 4202501 | Fine filter, DC 3800 TR EX              | Pleated      | Polyester, antistatic | 1.5 /16.2                               | IEC EN 60335-2-69 Part 1 | 176°F /80°C  |
| 42024   | HEPA filter, DC 3800 TR EX, DC 4000 PCB | Pleated      | Cellulose, fibreglass | 1.5 /16.2                               | HEPA H13 EN 1822-1       | 266°F /130°C |

**DC 5800 Turbo Ex, DC 5900, DC 5900 Asbestos, DC 5900 TR, DC Storm 500/600/700**

| Part No | Type of filter / Machine  | Construction                    | Material              | Area [m <sup>2</sup> /ft <sup>2</sup> ] | Classification           | Max temp     |
|---------|---|---------------------------------|-----------------------|---|--------------------------|--------------|
| 429203  | Fine filter, PTFE, DC 5900  | Pleated around support cylinder | Polyester, PTFE       | 5.0 /53.8                               | IEC EN 60335-2-69 Part 1 | 266°F /130°C |
| 44081   | Fine filter, PTFE, DC Storm 600/700L  | Pleated around support cylinder | Polyester, PTFE       | 5.0 /53.8                               | IEC EN 60335-2-69 Part 1 | 266°F /130°C |
| 429204  | Fine filter, DC 5900c 9.2 kW S, DC 5900 Asbestos 4 kW, DC 5900 TR   | Pleated around support cylinder | Polyester             | 5.0 /53.8                               | IEC EN 60335-2-69 Part 1 | 266°F /130°C |
| 44212   | Fine filter, DC Storm 500acL, DC Storm 600/700ac  | Pleated around support cylinder | Polyester             | 5.0 /53.8                               | IEC EN 60335-2-69 Part 1 | 266°F /130°C |
| 4292    | Fine filter, DC 5900c 9.2 kW P, DC 5900c Asbestos 9.2 kW P  | Pleated around support cylinder | Polyester             | 8.4 /90.4                               | IEC EN 60335-2-69 Part 1 | 266°F /130°C |
| 429206  | Fine filter, DC 5800 Turbo Ex   | Pleated around support cylinder | Polyester             | 8.4 /90.4                               | IEC EN 60335-2-69 Part 1 | 266°F /130°C |
| 42869   | HEPA filter, DC 5800 Turbo Ex, DC 5900 4/9.2 kW S, DC 5900 Asbestos 4 kW (installed under top cover), DC 5900 TR, DC Storm 500acL | Pleated around support cylinder | Cellulose, fibreglass | 2.7 /29                                 | HEPA H13 EN 1822-1       | 176°F /80°C  |
| 42807   | HEPA filter, DC Storm 600L, DC 5900c 9.2 kW S/P, DC 5900c Asbestos 9.2 kW P   | Pleated around support cylinder | Cellulose, fibreglass | 3.7 /39.8                               | HEPA H13 EN 1822-1       | 176°F /80°C  |

**DC AirCube**

| Part No | Type of filter / Machine  | Construction                    | Material              | Area [m <sup>2</sup> /ft <sup>2</sup> ] | Classification     | Max temp    |
|---------|---------------------------|---------------------------------|-----------------------|---|--------------------|-------------|
| 42690   | Pre-filter, AirCube 500   | Pleated carpet                  | Polyester             | 0.18 /1.9                               | G4                 | 176°F /80°C |
| 42692   | HEPA filter, AirCube 500  | Pleated                         | Cellulose, fibreglass | 4.56 /49                                | HEPA H13 EN 1822-1 | 176°F /80°C |
| 42918   | Pre-filter, AirCube 1200  | Cartridge                       | Polyester             | 0.4 /4.3                                | G4                 | 140°F /60°C |
| 42940   | HEPA filter, AirCube 1200 | Pleated                         | Cellulose, fibreglass | 5 /54                                   | HEPA H13 EN 1822-1 | 194°F /90°C |
| 42917   | Pre-filter, AirCube 2000  | Cartridge                       | Polyester             | 0.5 /5.4                                | G4                 | 140°F /60°C |
| 42896   | HEPA filter, AirCube 2000 | Pleated around support cylinder | Cellulose, fibreglass | 10 /107                                 | HEPA H13 EN 1822-1 | 194°F /90°C |

## DC 1800/2900, DC 1800/2800 EX, DC 1800/2800 TR EX, DC 1800/2800 Asbestos

| Part No  | Type of filter / Machine  | Construction                    | Material                 | Area [m <sup>2</sup> /ft <sup>2</sup> ] | Classification           | Max temp     |
|----------|---|---------------------------------|--------------------------|---|--------------------------|--------------|
| 42029    | Fine filter,<br>DC 1800/2900cL  | Pleated around support cylinder | Cellulose, epoxy-treated | 1.5 /16.2                               | IEC EN 60335-2-69 Part 1 | 176°F /80°C  |
| 42029ST  | Fine filter x 48  | Pleated around support cylinder | Cellulose                | 1.5 /16.2                               | IEC EN 60335-2-69 Part 1 | 176°F /80°C  |
| 42028    | Fine filter,<br>DC 1800/2900a,<br>DC 1800/2800 Asbestos   | Pleated                         | Polyester                | 1.5 /16.2                               | IEC EN 60335-2-69 Part 1 | 266°F /130°C |
| 42028-01 | Fine filter,<br>DC 1800/2900, 1800/2800 TR EX<br>DC 1800/2800 EX                                  | Pleated                         | Polyester, antistatic    | 1.5 /16.2                               | IEC EN 60335-2-69 Part 1 | 266°F /130°C |
| 42028-02 | Fine filter, PTFE<br>DC 1800/2900   | Pleated                         | Polyester, PTFE          | 1.5 /16.2                               | IEC EN 60335-2-69 Del1   | 100 °C       |
| 42027    | HEPA filter,<br>DC 1800/2900,<br>DC 1800/2800 EX,<br>DC 1800/2800 TR EX,<br>DC 1800/2800 Asbestos | Pleated                         | Cellulose, fibreglass    | 0.85 /9.1                               | HEPA H13 EN 1822-1       | 176°F /80°C  |

## Filters for old models

For a complete list of all filter for old machines, please visit Dustcontrols website:  
<https://dustcontrol.us/product/filters-older-models/>

### DC 2500i, DC 2500, DC 2500 Twin

| Part No | Description                                | Construction                    | Material              | Area [m <sup>2</sup> /ft <sup>2</sup> ] | Classification           | Max temp     |
|---------|--|---------------------------------|-----------------------|---|--------------------------|--------------|
| 4889    | Fine filter                                | Pleated                         | Polyester             | 1.4 /15                                 | IEC EN 60335-2-69 Part 1 | 266°F /130°C |
| 404901  | Fine filter                                | Pleated around support cylinder | Cellulose             | 1.5 /16.2                               | IEC EN 60335-2-69 Part 1 | 158°F /70°C  |
| 4821    | HEPA filter K                              | Pleated                         | Cellulose, fibreglass | 1.5 /16.2                               | HEPA H13 EN 1822-1       | 158°F /70°C  |
| 4133    | HEPA filter<br>(fitted in the fine filter) | Pleated around support cylinder | Cellulose, fibreglass | 0.5 /5.4                                | HEPA H13 EN 1822-1       | 176°F/80°C   |

### DC 2700c, DC 2700i, DC 2800c, DC 2800c Rental

(Machines from serial number 2527595 can be equipped with HEPA filter (Part No 42027).  
Older models should be equipped with a HEPA combi-filter.

| Part No | Description   | Construction                    | Material                 | Area [m <sup>2</sup> /ft <sup>2</sup> ] | Classification           | Max temp     |
|---------|---|---------------------------------|--------------------------|---|--------------------------|--------------|
| 4889    | Fine filter   | Pleated                         | Polyester                | 1.4 /15                                 | IEC EN 60335-2-69 Part 1 | 266°F /130°C |
| 404901  | Fine filter   | Pleated around support cylinder | Cellulose                | 1.5 /16.2                               | IEC EN 60335-2-69 Part 1 | 158°F /70°C  |
| 4821    | HEPA filter K   | Pleated                         | Cellulose, fibreglass    | 1.5 /16.2                               | HEPA H13 EN 1822-1       | 158°F /70°C  |
| 4133    | HEPA filter<br>(fitted in the fine filter)              | Pleated around support cylinder | Cellulose, fibreglass    | 0.5 /5.4                                | HEPA H13 EN 1822-1       | 176°F/80°C   |
| 40479   | Combi-filter (Fine filter + HEPA filter), (GS Asbestos) | Pleated                         | Cellulose, epoxy-treated | 1.5 /16.2                               | HEPA H13 EN 1822-1       | 176°F /80°C  |

## Accessories and Consumables

# Filters for old models

For a complete list of all filter for old machines, please visit Dustcontrols website:  
<https://dustcontrol.us/product/filters-older-models/>

### DC 3500, DC 3500TR, DC 3500 Stationary, DC 5500, DC 5500i

| Part No | Description   | Construction                    | Material              | Area [m <sup>2</sup> /ft <sup>2</sup> ] | Classification           | Max temp    |
|---------|---|---------------------------------|-----------------------|---|--------------------------|-------------|
| 408801  | Fine filter   | Pleated                         | Polyester             | 1.6 /17                                 | IEC EN 60335-2-69 Part 1 | 176°F/80°C  |
| 408803  | Fine filter   | Pleated                         | Cellulose             | 1.6 /17                                 | IEC EN 60335-2-69 Part 1 | 176°F/80°C  |
| 4821    | HEPA filter, DC 3500 TR   | Pleated                         | Cellulose, fibreglass | 1.5 /16.2                               | HEPA H13 EN 1822-1       | 158°F /70°C |
| 4366    | HEPA filter, DC 3500 (installed on exhaust)                     | Pleated around support cylinder | Cellulose, fibreglass | 1.2 /12.9                               | HEPA H13 EN 1822-1       | 176°F/80°C  |
| 4422    | HEPA filter, DC 5500 5 kW, 9.2 kW S (installed under top cover) | Pleated around support cylinder | Cellulose, fibreglass | 2.5 /26.9                               | HEPA H13 EN 1822-1       | 176°F/80°C  |
| 4017    | HEPA filter, DC 5500 9.2 kW P (installed on exhaust)            | Pleated around support cylinder | Cellulose, fibreglass | 2.8 /30                                 | HEPA H13 EN 1822-1       | 176°F/80°C  |

### DC 3500i, DC 5700c, DC 5800 a/c 5 kW, DC 5800 a/c PTFE; DC Storm LPG

| Part No | Description   | Construction                    | Material              | Area [m <sup>2</sup> /ft <sup>2</sup> ] | Classification     | Max temp    |
|---------|---|---------------------------------|-----------------------|---|--------------------|-------------|
| 4917    | Combi-filter DC 3500i (Fine filter + HEPA H13 filter)           | Pleated                         | Cellulose, fibreglass | 1.5 /16.2                               | HEPA H13 EN 1822-1 | 176°F/80°C  |
| 4422    | HEPA filter, DC 5700 5 kW, 9.2 kW S (installed under top cover) | Pleated around support cylinder | Cellulose, fibreglass | 2.5 /26.9                               | HEPA H13 EN 1822-1 | 176°F/80°C  |
| 4017    | HEPA filter, DC 5700 9.2 kW P (installed on exhaust)            | Pleated around support cylinder | Cellulose, fibreglass | 2.8 /30                                 | HEPA H13 EN 1822-1 | 176°F/80°C  |
| 42807   | HEPA filter, DC Storm LPG,                                      | Pleated around support cylinder | Cellulose, fibreglass | 3.7 /39.8                               | HEPA H13 EN 1822-1 | 176°F /80°C |

### DC 380, DC 1500, DC AirCube

| Part No | Description                   | Construction            | Material   | Area [m <sup>2</sup> /ft <sup>2</sup> ] | Classification           | Max temp    |
|---------|-------------------------------|-------------------------|------------|---|--------------------------|-------------|
| 4080    | Pre-filter, DC 380/DC AirCube | Carpet                  | Polyester  | 0.1 /1                                  | IEC EN 60335-2-69 Part 1 | 212°F/100°C |
| 4669    | Pre-filter, DC 1500           | Carpet                  | Polyester  | 0.3 /3.2                                | IEC EN 60335-2-69 Part 1 | 212°F/100°C |
| 42136   | HEPA filter, DC AirCube       | Pleated HEPA filter box | Fibreglass | 5.2 /55.9                               | EN 1822-1, HEPA H13      | 176°F/80°C  |

### DC 3700c, DC 3800a/c, DC 3800c Turbo, DC 3800 Turbo EX, DC 3800c Twin DC 3800 TR S, DC 3800i, DC 3800 Stationary, DC 3900, DC Wood Shavings Extractor

| Part No | Description                                   | Construction                    | Material                 | Area [m <sup>2</sup> /ft <sup>2</sup> ] | Classification           | Max temp   |
|---------|---|---------------------------------|--------------------------|---|--------------------------|------------|
| 42026   | Fine filter, DC 3700c                         | Pleated around support cylinder | Cellulose, epoxy-treated | 1.8 /19.4                               | IEC EN 60335-2-69 Part 1 | 176°F/80°C |
| 42026ST | Fine filter x 24                              | See above                       | Cellulose                | 1.8 /19.4                               | IEC EN 60335-2-69 Part 1 | 176°F/80°C |
| 42025   | Fine filter, DC Wood Shavings Extr.           | Pleated                         | Polyester                | 1.8 /19.4                               | IEC EN 60335-2-69 Part 1 | 176°F/80°C |
| 42025ST | Fine filter x 24                              | Pleated                         | Polyester                | 1.8 /19.4                               | IEC EN 60335-2-69 Part 1 | 176°F/80°C |
| 42465   | Fine filter, PTFE                             | Pleated around support cylinder | Polyester, PTFE          | 1.8 /19.4                               | IEC EN 60335-2-69 Part 1 | 176°F/80°C |
| 42024   | HEPA filter, DC Wood Shavings Extr., DC 3700c | Pleated                         | Cellulose, fibreglass    | 1.5 /16.2                               | HEPA H13 EN 1822-1       | 176°F/80°C |
| 4202501 | Fine filter                                   | Pleated                         | Antistatic               | 1.5 /16.2                               | IEC EN 60335-2-69 Part 1 | 176°F/80°C |
| 42398   | Fine filter, grounded                         | Pleated around support cylinder | Polyester                | 1.8 /19.4                               | IEC EN 60335-2-69 Part 1 | 176°F/80°C |

# Plastic Bags

## Accessories and Consumables

| MODEL                     | Standard Bag [Prod No]                            | Antistatic/ESD     | Volume [l/gal] | Size Standard bag WxH [mm/in]                |
|---------------------------|---|--------------------|----------------|--|
| DC 1800                   | 42291 <sup>A</sup>                                | 42951 <sup>D</sup> | 30/7.9         | 350x200x550 /13.8x7.9x21.7                   |
| DC 1800 XL                | 42285 <sup>D</sup>                                | 42384 <sup>D</sup> | 60/15.5        | 360x700 /14x27.5                             |
| DC 2900 c                 | 42702 <sup>A</sup>                                | -                  | 31/7.9         | 280x180x800 / 11x7.1x31.5x34.2 + 23 m /75 ft |
| DC 2900 L                 | 44763 <sup>B</sup> + 432177 <sup>B</sup> Longopac | -                  | 20/5           | 12 m /39 ft + 23 m /75 ft                    |
| DC 1800 H Asbestos        | 42285 <sup>D</sup>                                | 42384 <sup>D</sup> | 20/5           | 360x700 /14x27.5                             |
| DC 2800 H Asbestos        | 42285 <sup>D</sup>                                | 42384 <sup>D</sup> | 70/15.4        | 360x700 /14x27.5                             |
| DC Tromb 400 c            | 43619 <sup>A</sup>                                | 42384 <sup>D</sup> | 33/7.3         | 500x850 /19.7x33.5                           |
| DC Tromb 400 a            | 42285 <sup>G</sup>                                | 42384 <sup>D</sup> | 70/15.4        | 360x700 /14x27.5                             |
| DC Tromb 400 L            | 432177 <sup>B</sup> Longopac                      | -                  | -              | 23 m /75 ft                                  |
| DC Tromb Turbo Direct c   | 43619 <sup>A</sup>                                | 42384 <sup>D</sup> | 33/7.3         | 280x170x870 /11x6.7x34.3                     |
| DC Tromb Turbo Direct L   | 432177 <sup>B</sup> Longopac                      | -                  | -              | 23 m /75 ft                                  |
| DC Tromb Turbo VFD c      | 43619 <sup>A</sup>                                | 42384 <sup>D</sup> | 33/7.3         | 280x170x870 /11x6.7x34.3                     |
| DC Tromb Turbo VFD L      | 432177 <sup>B</sup> Longopac                      | -                  | -              | 23 m /75 ft                                  |
| DC Tromb Twin aa          | 42285 <sup>G</sup>                                | 42384 <sup>D</sup> | 70/15.4        | 360x700 /14x27.5                             |
| DC Tromb Twin cc          | 43619 <sup>A</sup>                                | 42384 <sup>D</sup> | 33/7.3         | 280x170x870 /11x6.7x34.3                     |
| DC Tromb Twin cL          | 43619 <sup>A</sup> + 432177 <sup>B</sup> Longopac | 42384 <sup>D</sup> | 33/7.3         | 280x170x870 /11x6.7x34.3 + 23 m /75 ft       |
| DC Tromb Twin LL          | 432177 <sup>B</sup> Longopac                      | -                  | -              | 23 m /75 ft                                  |
| DC Tromb 400 H Asbestos   | 42285 <sup>G</sup>                                | 42384 <sup>D</sup> | 70/15.4        | 360x700 /14x27.5                             |
| DC Chip Extractor         | 4714 <sup>C</sup>                                 | -                  | 90/23          | 700x1100 /27.5x43.3                          |
| DC 4000 PCB               | 42285 <sup>D</sup>                                | 42384 <sup>D</sup> | 70/15.4        | 360x700 /14x27.5                             |
| DC 5900 c                 | 46145 <sup>A</sup>                                | -                  | 60/15.9        | 420x220x1000 /16.5x8.7x39.4                  |
| DC 5900 L                 | 44077 <sup>D</sup> Longopac + 44248 <sup>E</sup>  | -                  | -              | 25 m /82 ft                                  |
| DC 5900 H Asbestos        | 46141 <sup>D</sup>                                | -                  | 75/19.8        | 700x1100 /27.5x43.3                          |
| DC Storm c                | 46145 <sup>A</sup>                                | -                  | 60/15.5        | 640x1000 /25.2x39.4                          |
| DC Storm LPG              | 44077 <sup>D</sup> Longopac                       | -                  | -              | 25 m /82 ft                                  |
| S 11000                   | 4714 <sup>C</sup>                                 | 42111 <sup>C</sup> | 100/26.4       | 700x1100 /27.5x43.3                          |
| S 11000                   | 44078 <sup>D</sup> Holder                         | 42111 <sup>C</sup> | 90/23          | 700x1100 /27.5x43.3                          |
| S 2100/32000/34000/34000X | 4714 <sup>C</sup>                                 | 42111 <sup>C</sup> | 100/26.4       | 700x1100 /27.5x43.3                          |
| DC 50W /DC 75W            | 42190 <sup>D</sup>                                | -                  | -              | -  |
| DCF Storm c               | 46145 <sup>A</sup>                                | -                  | 60/15.5        | 640x1000 /25.2x39.4                          |
| DCF Storm L               | 44077 <sup>D</sup> Longopac                       | -                  | -              | 25 m /82 ft                                  |
| DCF 2900 c                | 42702 <sup>A</sup>                                | -                  | 20/5           | 440x550 /17x 21.7                            |
| DCF 2900 L                | 44763 <sup>B</sup>                                | -                  | 40/10          | 12 m /39 ft                                  |
| DCF Tromb c / DCF Tromb a | 43619 <sup>A</sup> / 42285 <sup>G</sup>           | -                  | 33/7.3         | 280x170x870 /11x6.7x34.3                     |
| DCF Tromb L               | 432177 <sup>B</sup> Longopac                      | -                  | -              | 23 m /75 ft                                  |
| DCF Mobile                | 4714 <sup>C</sup>                                 | 42111 <sup>C</sup> | 100/26.4       | 700x1100 /27.5x43.3                          |
| F 20000                   | 4714 <sup>C</sup>                                 | 42111 <sup>C</sup> | 100/26.4       | 700x1100 /27.5x43.3                          |
| F 30000                   | 4714 <sup>C</sup>                                 | 42111 <sup>C</sup> | 100/26.4       | 700x1100 /27.5x43.3                          |
| DC 1800/2800 EX           | -   | 42951 <sup>F</sup> | 40/8.8         | 360x400 /14x15.7                             |
| DC Tromb Turbo EX         | -   | 42385 <sup>G</sup> | 175/38.5       | 360x700 /14x27.5                             |
| DC 5800 Turbo EX          | -   | 42111 <sup>C</sup> | 175/38.5       | 450x1100 /17.7x43.3                          |
| DC 1800 TR EX             | -   | 42384 <sup>F</sup> | 70/15.4        | 360x700 /14x27.5                             |
| DC 2800 TR EX             | 42285 <sup>D</sup>                                | 42384 <sup>D</sup> | 70/15.4        | 360x700 /14x27.5                             |
| DC Tromb TR EX            | -   | 42384 <sup>F</sup> | 70/15.4        | 360x700 /14x27.5                             |
| DC 5900 Turbo TR          | 46145 <sup>A</sup>                                | -                  | 60/15.5        | 640x1000 /25.2x39.4                          |

**A** Set of 10 bags  
**B** Set of 4 bags  
**C** Set of 50 bags

**D** Individual bags  
**E** Adaption Kit for Longopac  
**F** Set of 25 bags

**G** Set of 5 bags



**Bag strap (Part No)**  
**4313, 1 m 4613, 1.5 m**

# Strategy and Certifications at Dustcontrol

Dustcontrol operates within the environmental sector. Our products are made to minimise the release of dust, fluids, and other hazardous particles into the environment. Our slogan, "Technology for Healthy Business", is an approach that characterises our entire operation.

We have enlisted the help of the EcoVadis platform to evaluate our sustainability work. Every year, their experts analyze documents that we share from our management system and based on that we get a ranking but also suggestions for future actions.



The four focus areas of Dustcontrol's strategy are:



RESPONSIBLE SOURCING  
REDUCED ENVIRONMENTAL IMPACT

SUSTAINABLE PRODUCT DEVELOPMENT  
ATTRACTIVE WORKPLACE

## THE GLOBAL GOALS



Dustcontrol is certified in accordance with ISO 9001, 14001 and 45001 with an integrated quality and environmental management system. This includes process management, identifying our environmental footprint, adhering to regulations, and training our employees in the topic. We carefully adhere to the EU's Reach and RoHS directives in order to minimise our use of chemicals. With the help of Lean production, we continuously evaluate our processes and look to improve our overall efficiency.





# Packaging

## Dustcontrol Premium Packaging

Dustcontrol is now offering a more robust premium alternative of packaging to protect and secure the transport of larger mobile and semi-mobile units. Premium packaging is designed for fast, quiet and ergonomic mounting/disassembly with the aid of sheet metal clips and tape sealing.

Premium Packaging is an option when ordering and the prices are set according to the table above. Up on return an undamaged packaging to Dustcontrol AB, half of the packaging cost will be credited.



### Part No Description

|       |   |
|-------|---|
| 44637 | Premium Packaging for DC 11-Module XL             |
| 44638 | Premium Packaging for DC 5900 / DC Storm          |
| 44639 | Premium Packaging for DC Storm                    |
| 44640 | Premium Packaging for DC 11-Module / DC Storm LPG |

## Dustcontrols Certified Service

# Meet our Certified Service Team!

We offer a complete service for any of your mobile machines or stationary vacuum systems. If you have a problem with your machine, always contact customer service. In order to get a registration number for your complaint.

Go to [www.dustcontrol.com](http://www.dustcontrol.com) to learn more!

Look out for these Dustdoctors!



# Get in Contact!

Contact our sales departments in US or Canada for further info, support, service or a demonstration.



**US** Dustcontrol Inc.  
6720 Amsterdam Way  
US-Wilmington, NC 28405  
Tel: +1 910-395-1808  
sales@dustcontrolusa.com  
www.dustcontrol.us



**Canada** Dustcontrol Canada Inc.  
664 Welham Road  
CA-Barrie, Ontario, L4N 9A1  
Tel: +1 877 844 8784  
info@dustcontrol.ca  
www.dustcontrol.ca

## Download our catalogues

from Dustcontrol.us or Dustcontrol.ca



Save time – use QR codes

There are QR codes on all our mobile machines. Scan the code and you will be able to see videos on filter cleaning and how to replace filters and plastic bags.

No QR reader in your smartphone?  
Download it from the App/Android store.

# Dustcontrol Worldwide



AT

Dustcontrol Ges.m.b.H.  
info@dustcontrol.at  
www.dustcontrol.at



AU

All Preparation Equipment  
www.allpreparationequipment.com.au



BA

TENZO d.o.o.  
info@tenzo.ba  
www.tenzo.ba



BENELUX

Dust Solutions BV  
www.dustsolutions.nl



CA

Dustcontrol Canada Inc.  
info@dustcontrol.ca  
www.dustcontrol.ca



CH

Rosset Technik  
Maschinen Werkzeuge AG  
info@rosset-technik.ch  
www.rosset-technik.ch



CL

Ambitec S.A.  
informaciones@ambitec.cl  
www.ambitec.cl



CN

Suzhou Dustcollect Filtration  
Technology Co. Ltd.  
wang@dustcollect.cn  
www.dustcollect.cn



CZ / SK

IML TRADING s. r. o.  
info@dustextraction.sk  
www.dustextraction.sk



DE

Dustcontrol GmbH  
info@dustcontrol.de  
www.dustcontrol.de



DK

**CONSTRUCTION:**  
Erenfred Pedersen A/S  
info@ep.dk  
www.ep.dk

**INDUSTRY:**  
Dansk Procesventilation ApS  
info@dansk-procesventilation.dk  
www.dansk-procesventilation.dk



EE

G-Color Baltic OÜ  
sales@g-color.ee  
www.g-color.ee



ES

Barin, s.a.  
info@barin.es  
www.barin.es



GB

Dustcontrol UK Ltd.  
sales@dustcontrol.co.uk  
www.dustcontrol.co.uk



GR

Mavrogiannakis S.A  
ekttox@enternet.gr  
www.ekttoxeftis.com.gr



FI

Dustcontrol FIN OY  
dc@dustcontrol.fi  
www.dustcontrol.fi



FR

**CONSTRUCTION:**  
SMH Equipements  
info@abequipements.com  
www.smhequipements.com

**INDUSTRY:**  
Dustcontrol AB  
info@dustcontrol.fra  
www.dustcontrol.fra



HR

Kermek d.o.o.  
kruno.nedeljko@kermek.com  
www.kermek.com



HU

Vandras Kft  
vandras@t-online.hu  
www.vandras.hu



IN

Advance Ventilation Pve Ltd.  
sales@advanceventilation.com  
www.advanceventilation.com



IT

Airum srl  
info@airum.com  
www.airum.com



KR

ESH Engineering Co.  
eshengco@gmail.com  
www.eshengco.com



LT

UAB Hidromega  
info@hidromega.lt  
www.hidromega.lt



LV

SIA Reaktivs  
reaktivs@reaktivs.lv  
www.reaktivs.lv



MY, ID

Städa Enviroospace Bhd  
info@stada.com.my  
www.stada.com.my



NO

Teijo Norge A.S  
firmapost@teijo.no  
www.teijo.no



NZ

Artizan Diamond Tools  
enquiry@artizandiamond.co.nz  
www.artizandiamond.co.nz



PE

Efixo  
contacto@efixo.pe  
www.efixo.pe



PH

Sweden Concrete Machines Inc.  
peringe@packoskick.se  
www.swedenconcretemachines.ph



PL

Bart Sp. z. o.o.  
info@bart-vent.pl  
www.bart-vent.pl



PT

Metec-Mecano Técnica, Lda.  
geral@metec.pt  
www.metec.pt



RO

**INDUSTRY:**  
General Contractor Industry SRL  
office@gci-grup.ro  
www.gci-grup.ro



RO

**CONSTRUCTION:**  
Concept Revolution SRL  
office@pardoseli.ro  
www.pardoseli.ro



RS

Enel Alati  
eneldoo@eunet.rs  
www.eneldoo.rs



SE

Dustcontrol AB  
info@dustcontrol.se  
www.dustcontrol.com



SG

Städa Enviroospace Pte Ltd  
Info@stada.com.my  
www.stada.com.my



TH

Vast Metal and Machinery Co., Ltd.  
vastmetal@vastmm.com  
www.vastmm.com



TR

Ventek Mühendislik Ltd.  
info@ventek.com.tr  
www.ventek.com.tr



AE

Global Enterprises Trading Co L.L.C.  
sales@globalentco.com  
www.globalentco.com

**GEM**  
Industrial Equipment Trading Co.  
Tel: +971 4 8840 474  
Email: gemuae@eim.ae



UA

MBK Obshemashkontrakt, JSC  
zao@omk.dp.ua  
www.omk.dp.ua



US

Dustcontrol Inc.  
info@dustcontrolusa.com  
www.dustcontrol.us



VN

Tayhostar JSC  
tayhostar@tayhostar.vn  
www.tayhostar.vn



Please contact the head office  
in Sweden if you do not find a  
distributor in your area.

info@dustcontrol.se



Healthy Business

**Dustcontrol**®

**US**

Dustcontrol Inc.  
6720 Amsterdam Way  
US-Wilmington, NC 28405  
Tel: +1 910 395 1808  
sales@dustcontrolusa.com  
www.dustcontrol.us

**Canada**

Dustcontrol Canada Inc.  
664 Welham Road  
CA-Barrie, Ontario, L4N 9A1  
Tel: +1 877 844 8784  
info@dustcontrol.ca  
www.dustcontrol.ca

**www.dustcontrol.us**  
**www.dustcontrol.ca**